



Atbara Road, TW11

£1,599,950

Dexters



Atbara Road, TW11

This beautiful detached Edwardian family home is located in the sought after "River Roads" of Teddington. The property offers four double bedrooms and is fully extended throughout to provide an excellent space.

From the entrance to the property this leads into a spacious double reception room. This room offers plenty of natural light with high ceilings and a large bay window. The rear of the property has been extended to create the large kitchen/breakfast family room. The kitchen has a sleek finish with ample storage throughout and a large central island providing the perfect entertaining space. The bi-folding doors lead onto the secluded garden which includes a large studio. Completing the ground floor there is a utility room and W/C.

Over the next two floors there are four double bedrooms. There are three bedrooms to the first floor and a family bathroom. To the second floor there is a large double bedroom with a separate shower room. There is potential to separate this space into two double bedrooms should this be needed.

Atbara Road is located off Kingston Road and Broom Road. The perfect location for transport links from Teddington and Hampton Wick mainline station. Teddington High Street is within easy reach along with Bushy Park.

Features

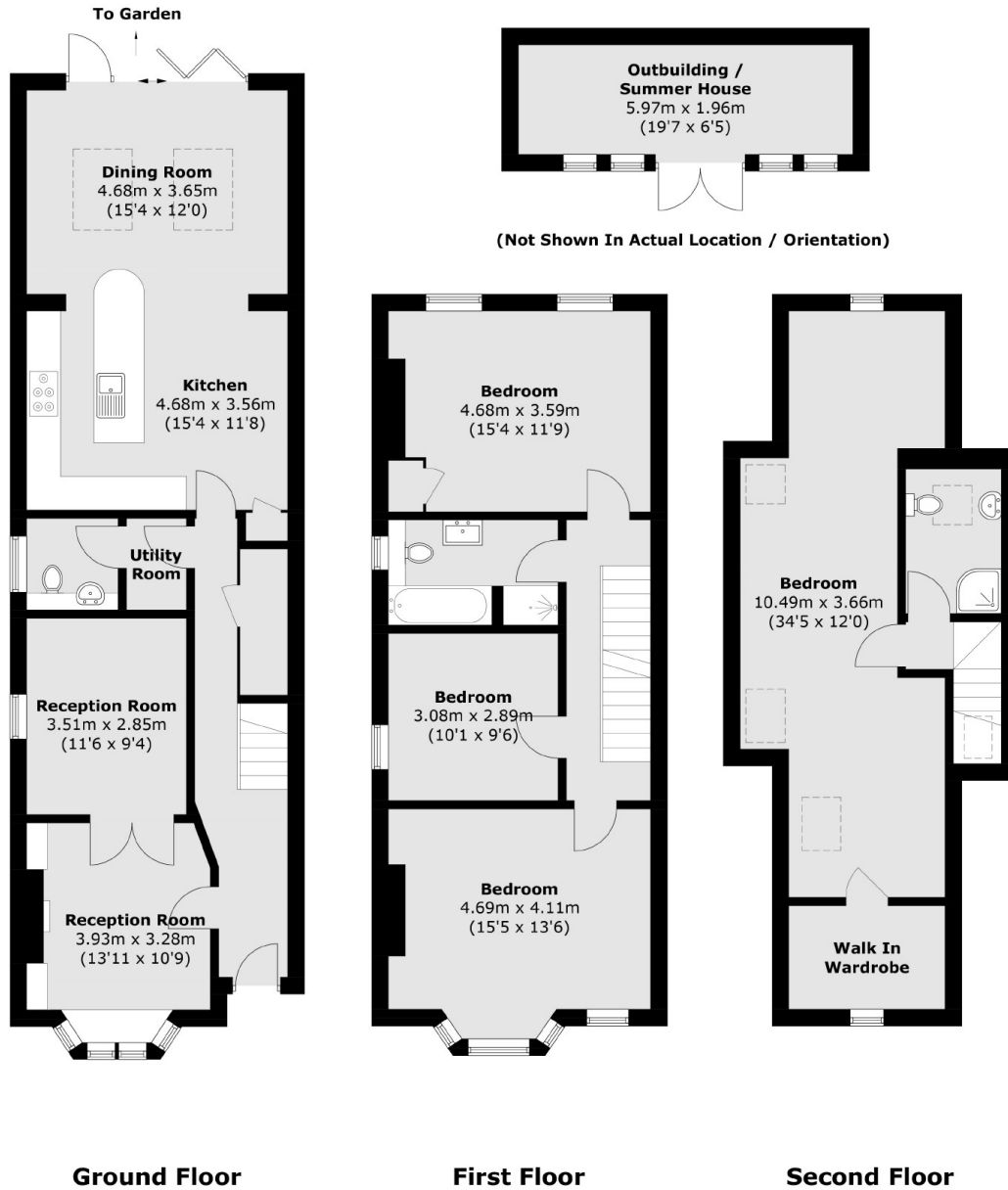
- Edwardian
- Four Bedrooms
- Excellent Condition
- Popular Residential Road
- Large Garden
- Summer House







Atbara Road, Teddington, TW11



Total area (approx.): 181.3 sq. m (1,951.5 sq. ft)
Outbuilding / Summer House: 11.9 sq. m (128.1 sq. ft)