



Railway Road, TW11

£649,950

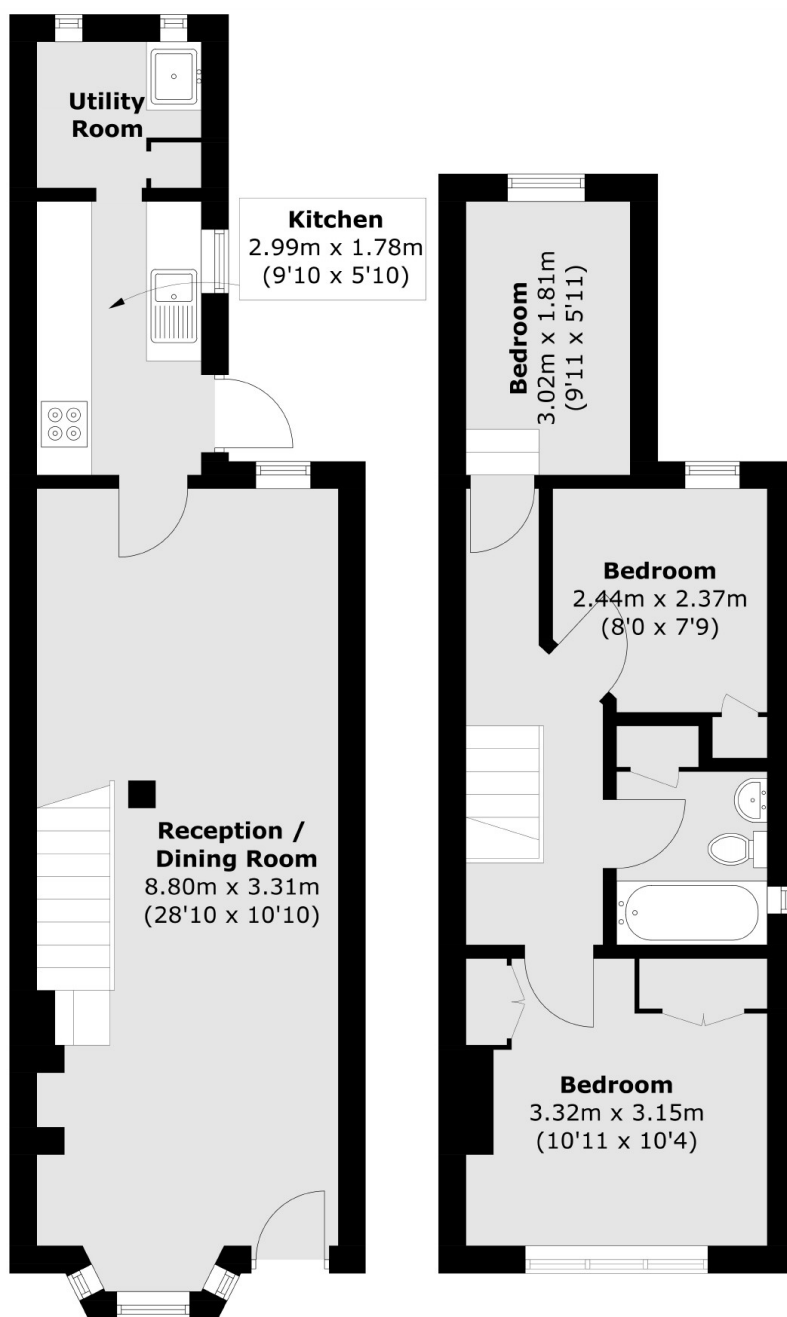
This Victorian semi-detached home is location is the popular residential road in the heart of Teddington. There are three bedrooms and ample living space throughout with potential for further renovation if required. There is a large east facing garden and ample living space throughout.

Railway Road is a quiet, sought-after residential street close to Teddington High Street with its range of shops, cafes and restaurants. There's also the choice of Teddington or Strawberry Hill mainline station.

Features

- Popular Location
- Potential for renovation
- Semi-Detached
- Three Bedrooms
- Large Garden
- Utility Room

Railway Road, Teddington, TW11



Ground Floor

First Floor

Total area (approx.): 70.2 sq. m (755.6 sq. ft)