



Royal Road, TW11

£925,000

Dexters



Royal Road, TW11

This end of terrace Victorian home is located in the popular "Royal Roads". Offering period charm throughout and a lovely secluded low maintenance garden.

Entering into the ground floor there is a spacious 26ft double reception room with living space and dining area. This room offers plenty of natural light with high ceilings, cornicing and a feature fireplace. To the rear of the house there is a kitchen leading to the utility room with additional storage space and access to the garden.

To the first floor the landing offers natural light from the side aspect window. There are three bedrooms and a bathroom. This home can lend itself to future potential by way of building into the loft and the ground floor subject to planning permission.

To the rear there is a lovely garden paved and easy to look after with a side access.

Royal Road is located a short walk from Teddington Broad Street, Teddington and Fulwell mainline stations plus there is easy access to Bushy Park.

Features

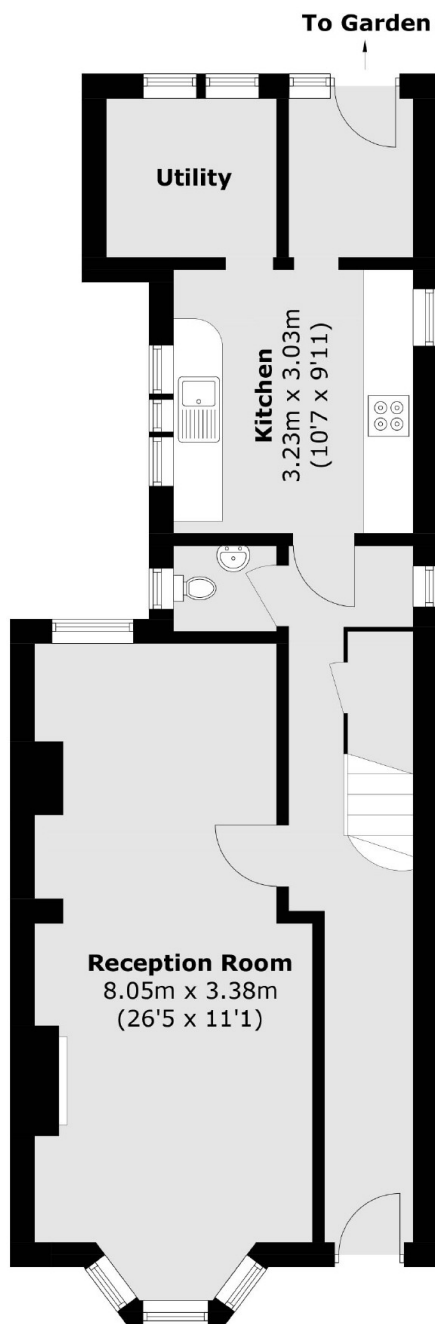
- End Of Terrace
- Three Bedrooms
- Side Access
- Period Features
- Excellent School Catchment
- Utility Room



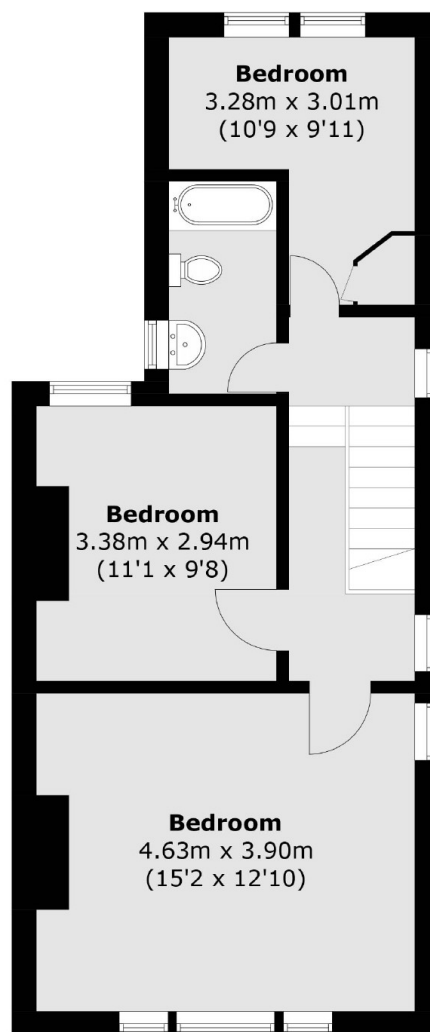




Royal Road, Teddington, TW11



Ground Floor



First Floor

Total area (approx.): 104.3 sq. m (1,122.7 sq. ft)