



## Ferry Road, TW11

£1,895 Per calendar month

Situated on the top floor of this impressive Victorian building, this two double bedroom flat is bright and spacious and offered in great condition with stunning roof top views.

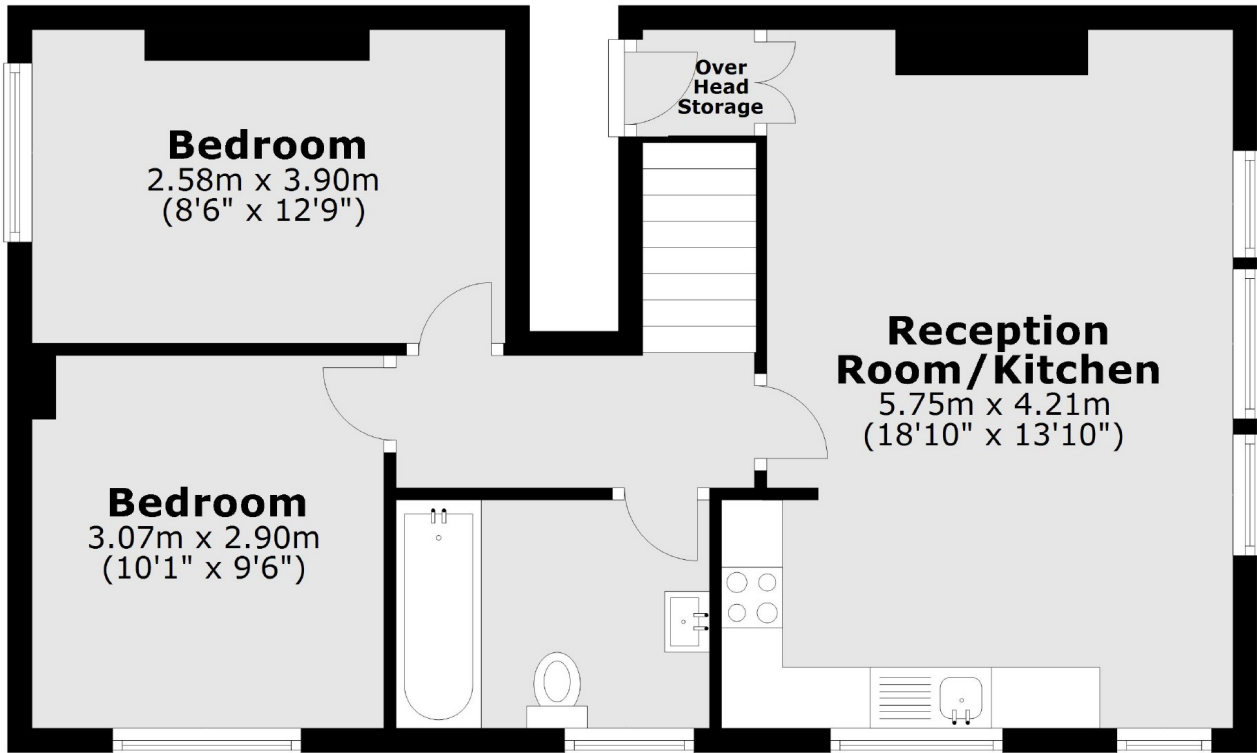
Ferry Road is an idyllic location close to the River Thames, Teddington high street and more importantly the selection of riverside bars and restaurants.

### Features

- Victorian Conversion
- Top Floor Apartment
- Two Double Bedrooms
- Spacious Living Room
- Open Plan Kitchen
- Modern Bathroom Suite

**Ferry Road,  
Teddington, TW11**

**Third Floor**



Total area: approx. 53.8 sq. metres (579.3 sq. feet)