



River Reach, TW11

£600,000

This stunning ground floor apartment has been beautifully refurbished, offering spacious living with direct access to a large private patio area and off street parking.

Beech Court is situated between Broom Lock and River Reach just off Broom Water. A wonderful spot giving easy access to Teddington and Hampton Wick Station as well as Teddington High Street and Kingston town centre.

Features

- Ground Floor
- Off Street Parking and Garage
- Private Patio
- Two Double Bedrooms
- Bathroom With Separate Cloakroom
- Excellent Storage



River Reach, TW11

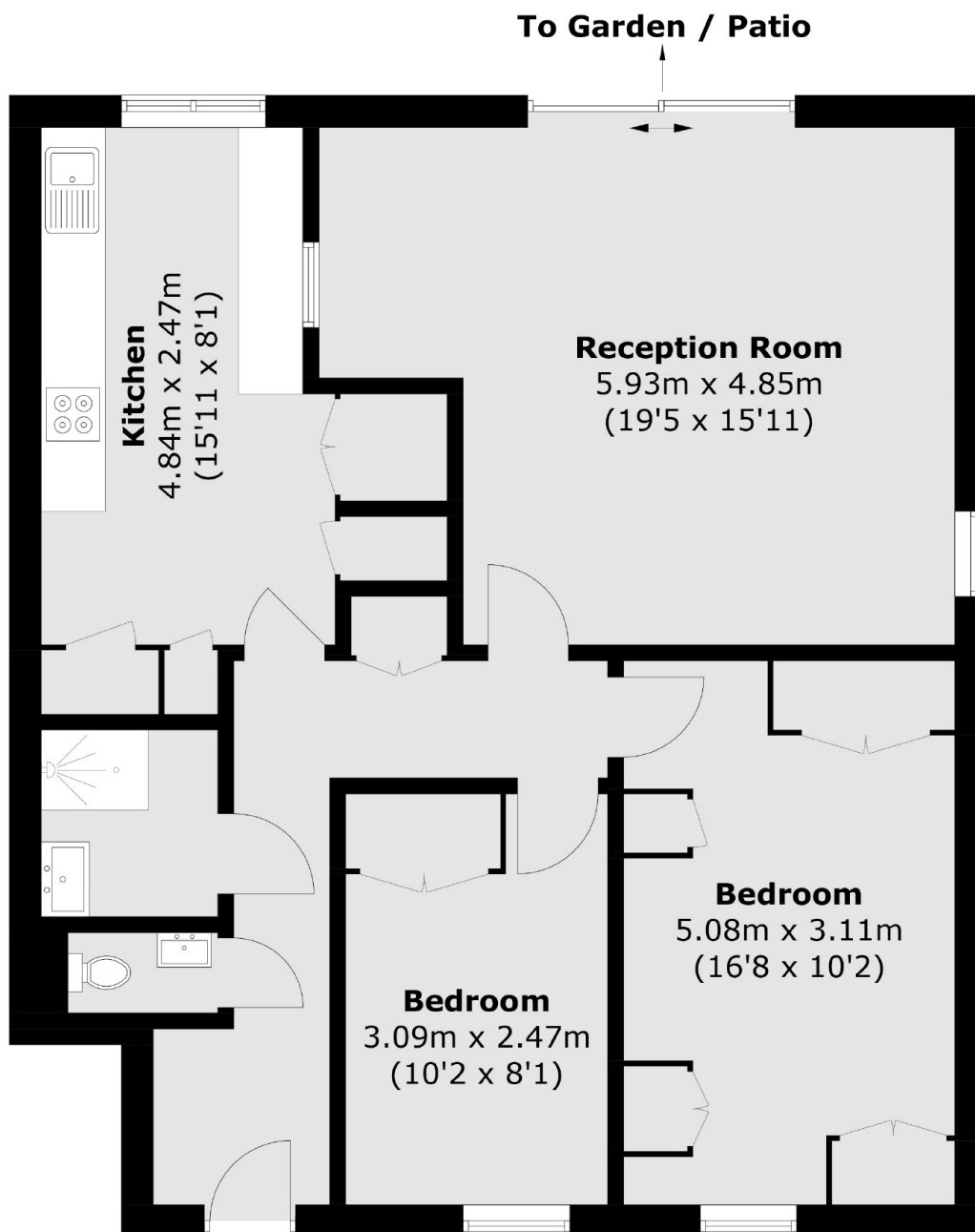
Entering the flat on the ground floor there is a shower room with separate cloakroom. The recently fitted kitchen has a modern feel with white units and extensive storage.

There are two double bedrooms with fitted wardrobes and a spacious reception room with doors onto the private patio area.

The patio area leads onto the communal grounds with wonderful views. The property further benefits from unallocated parking.



River Reach, Teddington, TW11



Ground Floor

Total area (approx.): 84.7 sq. m (911.7 sq. ft)

Dexters

Teddington
61 High Street
Teddington
TW11 8HA

Sales
020 8288 8288

Energy Rating: D. We aim to make our particulars both accurate and reliable. However they are not guaranteed; nor do they form part of an offer or contract. If you require clarification on any points then please contact us, especially if you're traveling some distance to view. Please note that appliances and heating systems have not been tested and therefore no warranties can be given as to their good working order.

 **RICS** | Regulated
Estate Agent
and Letting Agent

dexters.co.uk