



Christchurch Avenue, TW11
£1,399,950

Dexters



Christchurch Avenue, TW11

This stunning recently renovated family home is available to the market with no onward chain. This home has been beautifully designed to an exceptionally high standard throughout with a newly landscaped rear garden.

Enter into the hallway which leads through to the front reception room with a cosy log burner. The ground floor is configured with a spacious utility room and downstairs W/C. The kitchen is spacious and has been recently extended. This space is social and light and bright with bi folding doors on the landscaped garden. The sleek modern kitchen has integrated appliances and a breakfast bar looking onto the dining area.

To the first floor there are three bedrooms with fitted wardrobes and family bathroom. To the top floor there are two further bedrooms, one with an en suite shower room. There are floor to ceiling fitted wardrobes in the master bedroom and a huge amount of eaves storage on the top floor.

Christchurch Avenue is located close to Teddington High Street, local shops, bars and restaurants within 300 metres of Teddington mainline station. It is also an excellent spot for schools.

Features

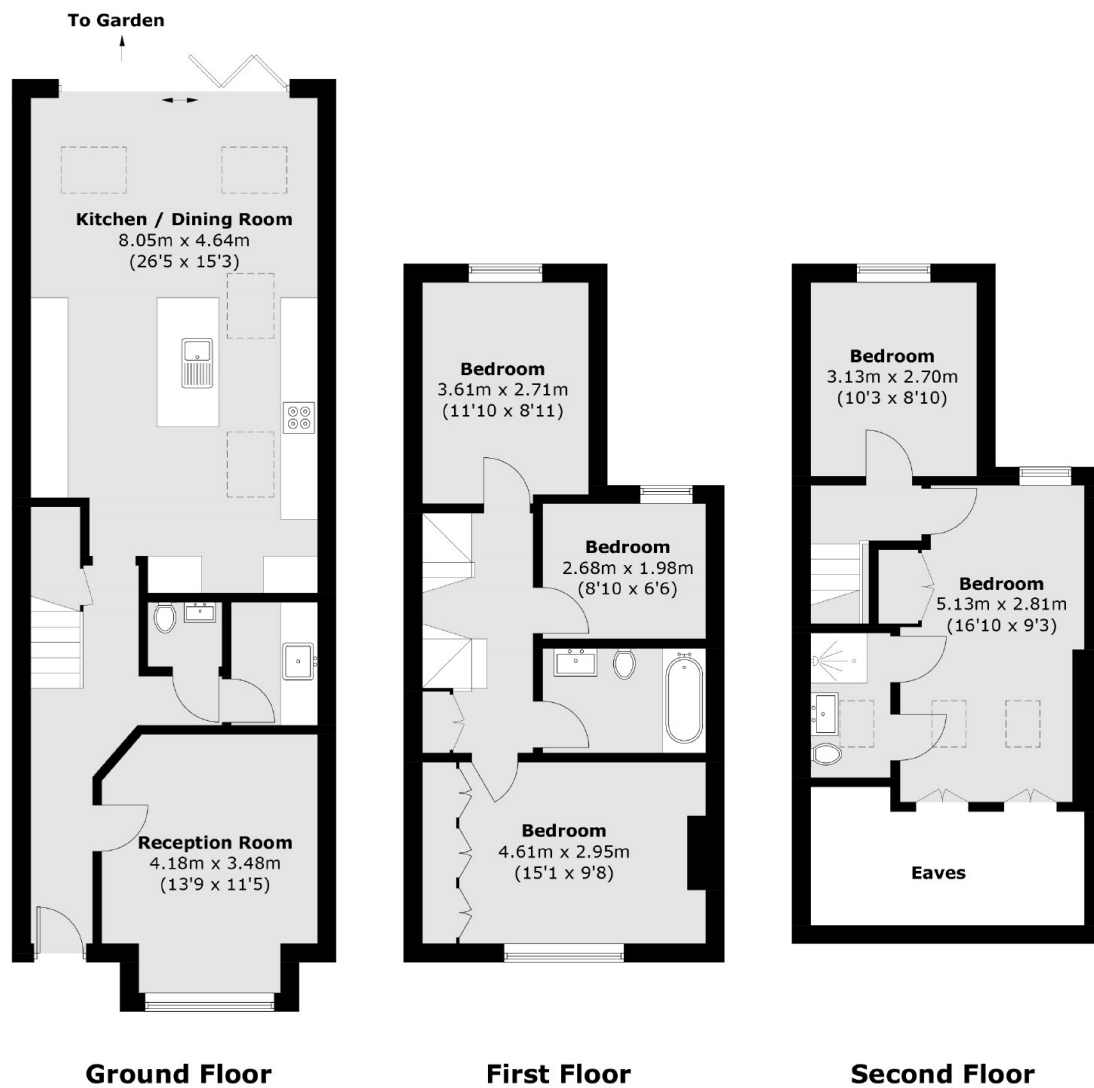
- Central Location
- Immaculate Condition
- Five Bedrooms
- Downstairs W/C And Utility
- No Onward Chain
- Landscaped Garden







Christchurch Avenue, Teddington, TW11



Total area (approx.): 140.1 sq. m (1,507.9 sq. ft)
(Excluding Eaves)