



## Southcott Road, TW11

£535,000

This apartment is located in a popular development opposite Royal Bushy Park. There is no onward chain with two double bedrooms and two bathrooms along with allocated parking.

Located on Southcott Road in Teddington with Bushy Park on your doorstep and a short walk to Kingston's shops, the property is excellently located for all amenities.

### Features

- Private Balcony
- Two Double Bedrooms
- Two Bathrooms
- Allocated Parking
- Communal Gardens
- Bushy Park Views



## Southcott Road, TW11

Located on the first floor this apartment is offered in good order throughout. Every room is light and spacious. The main living area is 19ft with floor to ceiling sliding doors which lead onto the private balcony. From this room you also have a direct view over Bushy Park. The reception room and kitchen are open plan with a central island breakfast bar. The kitchen units are modern and sleek along with integrated appliances.

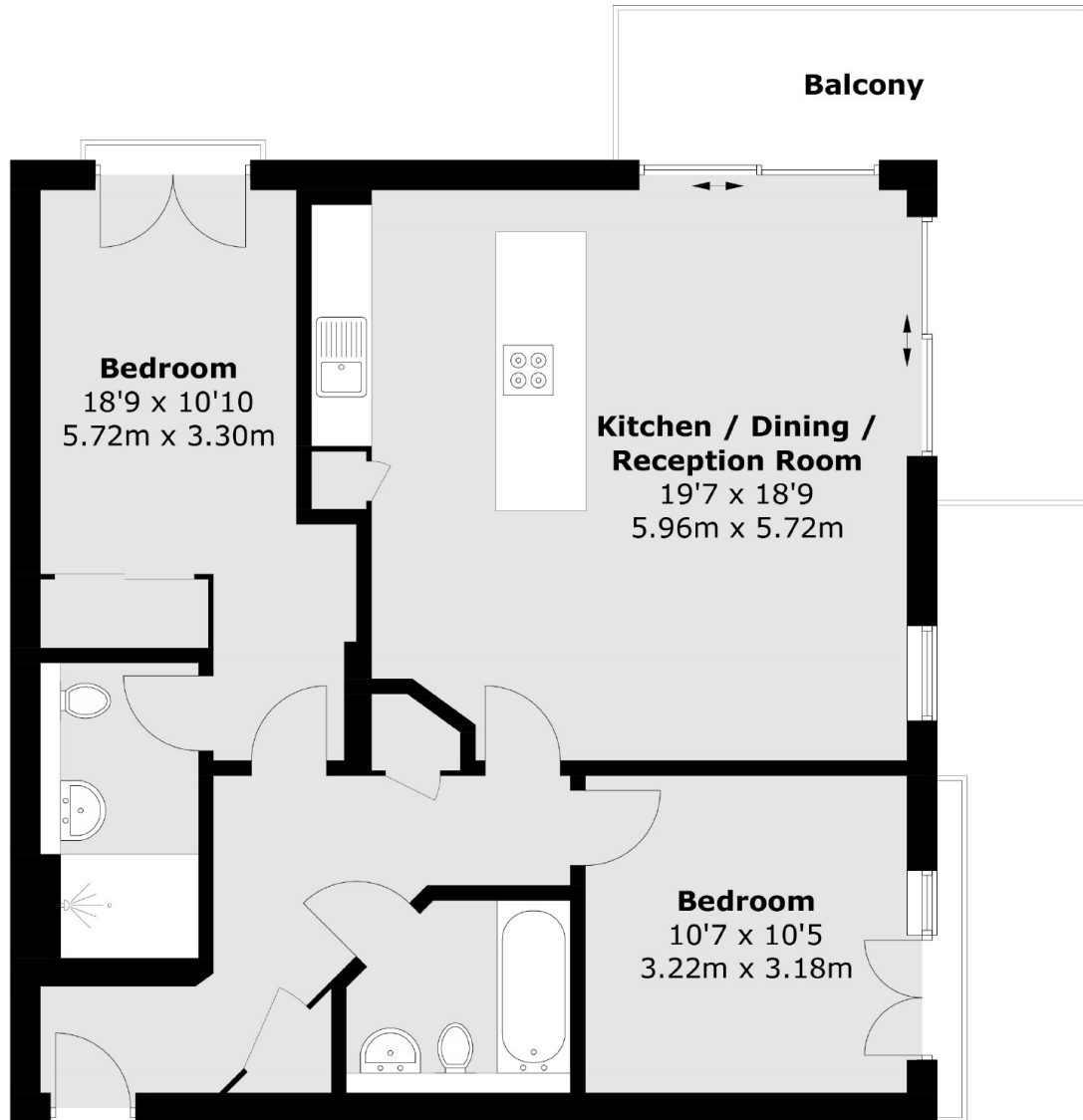
There are two double bedrooms, both with Juliet balconies, one with an en-suite shower room and there is also an additional bathroom.

The apartment is surrounded by a communal garden and there is allocated parking for one car.





# Southcott Road, Teddington, TW11



Total area (approx.): 79.7 sq. m (857.9 sq. ft)  
Balcony: 12.1 sq. m (130.2 sq. ft)