



Shacklegate Lane, TW11

£799,950

This Victorian end of terrace home is located in a popular road close to amenities, excellent schools and transport links. There are three bedrooms and a South facing garden. This is a must see!

Shacklegate Lane is perfectly located for transport with three stations in easy reach. Teddington High Street and Hampton High Street are close for shopping along with Bushy Park and The River Thames.

Features

- Victorian
- Three Double Bedrooms
- Kitchen Dining Room
- Two Bath/Shower Rooms
- Popular Location
- No Onward Chain



Shacklegate Lane, TW11

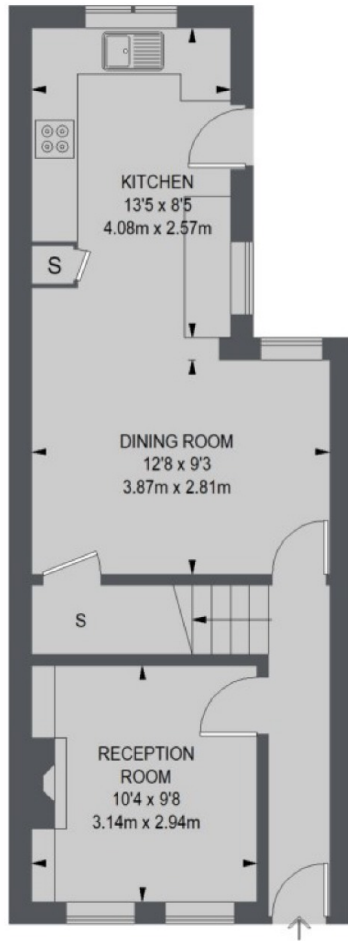
Well presented throughout there is a spacious front reception with built in storage and a feature fireplace. Throughout the house the large windows bring in plenty of light.

The open plan kitchen makes this room sociable with space for a sofa and to dine. The kitchen has doors opening onto a secluded South facing rear garden.

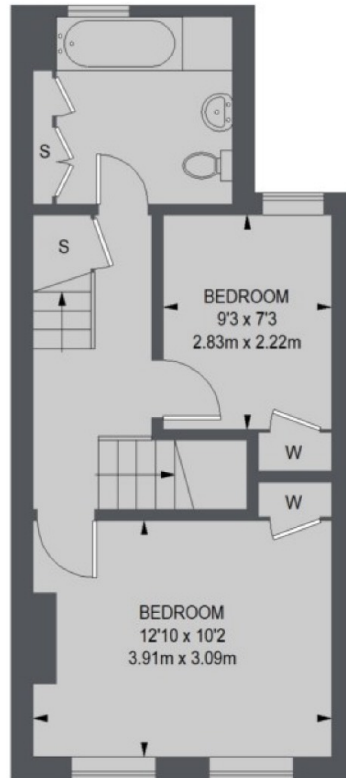
There are three good sized bedrooms. Two on the first floor with a smart family bathroom and a further double bedroom to the top floor with an en-suite shower room.



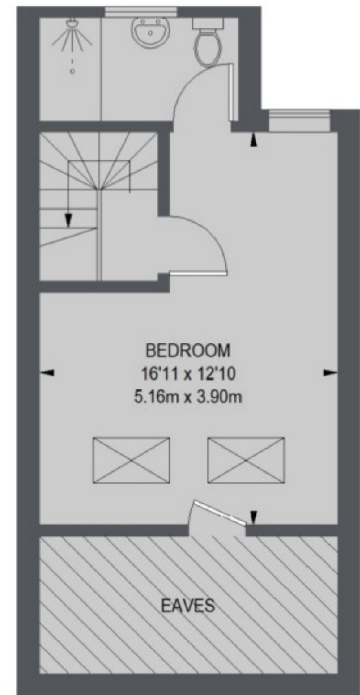
Shacklegate Lane, Teddington, TW11



GROUND FLOOR



FIRST FLOOR



SECOND FLOOR

TOTAL APPROX. FLOOR AREA (EXCLUDING EAVES)
1052 SQ. FT. (97.77 SQ. M.)