



**Claremont Road, TW11**

**£1,850,000**

**Dexters**





## Claremont Road, TW11

This stunning detached four bedroom house is situated in one of Teddington's premier tree lined streets close to the local shops and transport. The property boasts a garage, much sought after off road parking and a west facing garden.

To the ground floor there is a reception room to the front with a feature fireplace, a stunning well-appointed kitchen/breakfast family room with a central island, French windows looking onto the garden, utility room and cloakroom. The dining area opens onto a beautiful west facing garden with a water feature

To the first floor there are three double bedrooms and a family shower room then to the top floor there is a master bedroom with a Juliet balcony and en suite bathroom. The property also has potential to extend over the garage STPP. To the front of the house there is off street parking, the rear garden is west facing and well maintained with a garden studio and shed.

Claremont Road is an extremely desirable road running between Cambridge Road and Waldegrave Road close to local schools, Teddington High Street and train station.

### Features

- Detached
- Central Teddington
- Off Street Parking
- Four Double Bedrooms
- Two Bathrooms
- Original Features







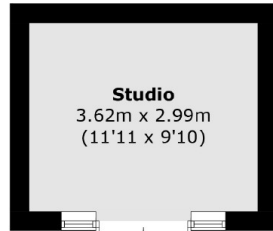




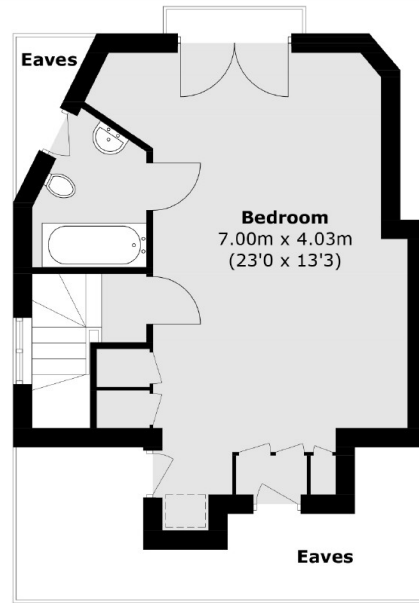




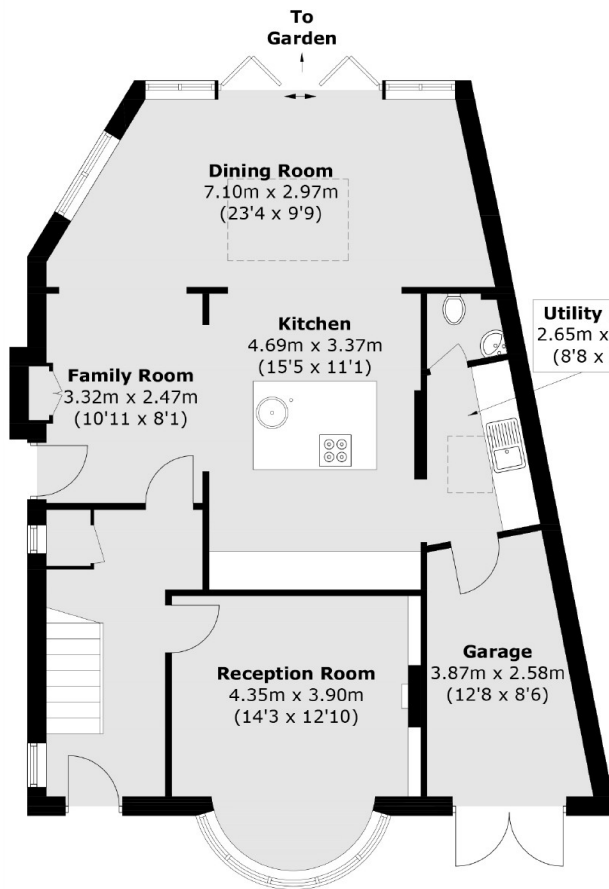
# Claremont Road, Teddington, TW11



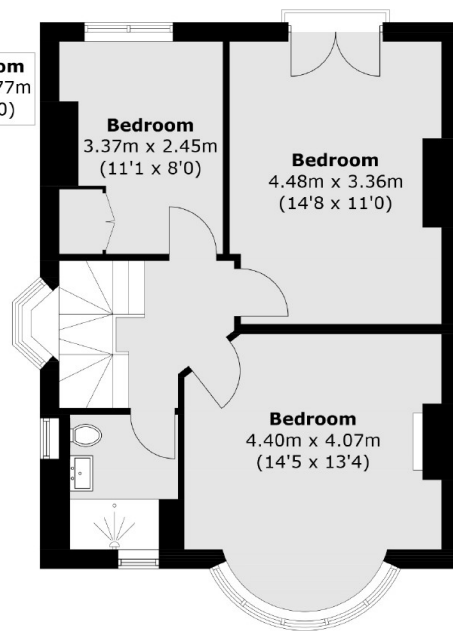
(Not Shown In Actual  
Location / Orientation)



**Second Floor**



**Ground Floor**



**First Floor**

Total area (approx.): 172.3 sq. m (1,854.6 sq. ft)  
Studio area (approx.): 11.0 sq. m (118.4 sq. ft)  
(Including Garage & Excluding Eaves)