



## Station Road, TW11

£5,000 Per calendar month

Gothic features are combined with contemporary design inside this luxury church conversion on Station Road. The 150 year old Christ Church was originally constructed in 1873, making it one of the first modern parish churches to be built in Teddington. After falling into disrepair, the building was bought by local award winning developers and transformed into a gated community with six contemporary duplex apartments.

As you enter the home, you'll find a multi-tiered reception and dining room centred around an original stone pillar and white spiral staircase. A set of steps take you up to the kitchen which has an exposed brick wall, underfloor heating and limestone floors. A pair of stained glass windows illuminate the kitchen countertops, whilst the church's original entryway has been reconfigured with glass doors that provide the downstairs area with an abundance of light.

Upstairs, there are two bedrooms each with their own en suite bathroom. Both rooms are framed by a limestone archway, edged with decorative criss-cross plasterwork, and feature a glass wall that looks down onto the floor below. The principal bedroom is particularly special, as one of its walls has floor-to-ceiling stained glass panels that depict angels and other religious imagery.

Crowned as London's best neighbourhood to live in by The Sunday Times, Teddington has a village feel that's popular with families and young professionals alike. Within the catchment of some of the area's best schools, Station Road is just 500 ft from Teddington station and nearby to Bushy Park and all the local amenities of the high street.

### Features

Church Conversion  
Gated Development  
High Specification  
Patio Garden  
Period Features  
Open Plan Living  
Allocated Parking



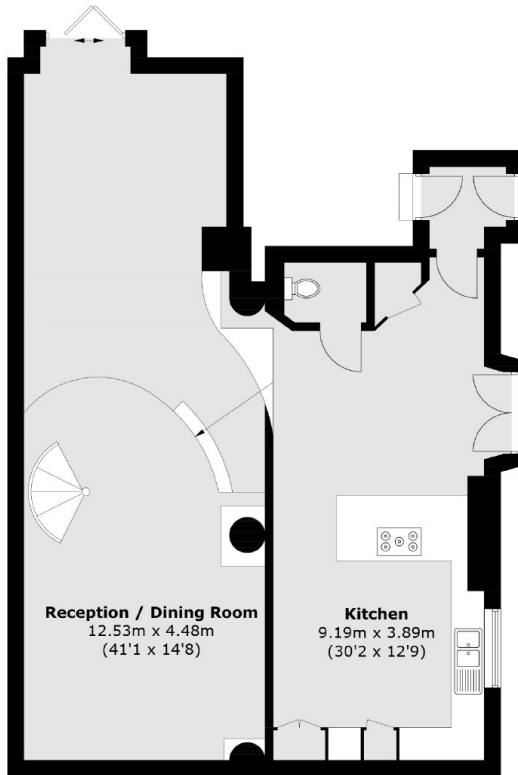
## Station Road, TW11

As you enter the home, you'll find a multi-tiered reception and dining room centred around an original stone pillar and white spiral staircase. A set of steps take you up to the kitchen which has an exposed brick wall, underfloor heating and limestone floors. A pair of stained glass windows illuminate the kitchen countertops, whilst the church's original entryway has been reconfigured with glass doors that provide the downstairs area with an abundance of light.

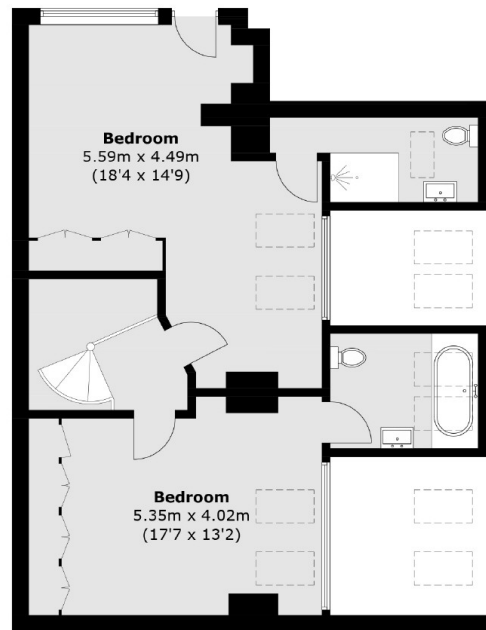
Upstairs, there are two bedrooms each with their own en suite bathroom. Both rooms are framed by a limestone archway, edged with decorative criss-cross plasterwork, and feature a glass wall that looks down onto the floor below. The principal bedroom is particularly special, as one of its walls has floor-to-ceiling stained glass panels that depict angels and other religious imagery.



Station Road,  
Teddington, TW11



Ground Floor



First Floor

Total area (approx.): 158.5 sq. m (1,706.1 sq. ft)