



Church Road, TW11

£435,000

Dexters



Church Road, TW11

This ground floor garden flat offers two bedrooms, a separate kitchen and access to a private sunny garden. The flat is in great condition throughout, in a central location close to all shops and transport plus benefits from share of freehold.

Your private front door opens into your living space with nice wood flooring opening onto the kitchen. There is a bathroom and two double bedrooms to the rear of the property with the master bedroom leading out onto the private garden.

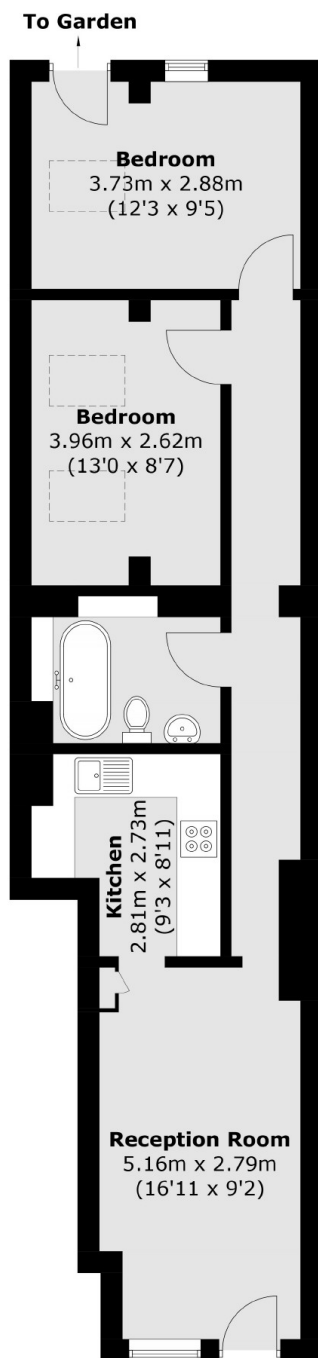
Church Road is a turning off Broad Street. This location is within easy reach of the River Thames and Royal Bushy Park and Teddington mainline station.

Features

- Ground Floor
- Two Bedrooms
- Private Garden
- Own Front Door
- Share Of Freehold



Church Road, Teddington, TW11



Total area (approx.): 58.9 sq. m (634.0 sq. ft)