



Stanley Road, TW11

£1,795 Per calendar month

Dexters



Stanley Road, TW11

Being split level this flat has plenty of space and light on the top two floors. There are two double bedrooms making it perfect for two people and the open plan kitchen lounge makes for a very sociable space.

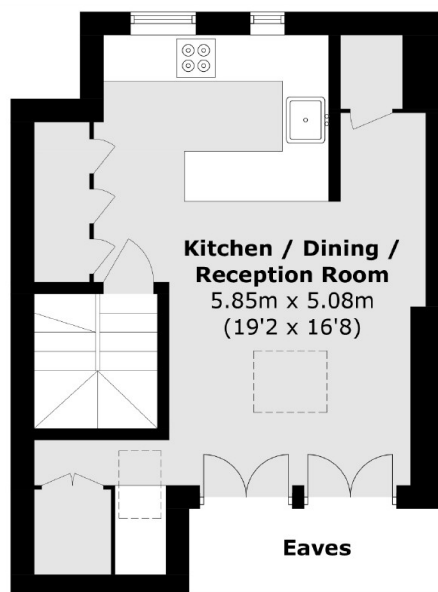
This conversion is at the Broad Street end of Stanley Road and is less than a mile's walk to Teddington train station. As well as the shops, bars and restaurants of Broad Street, Bushy Park is also close by.

Features

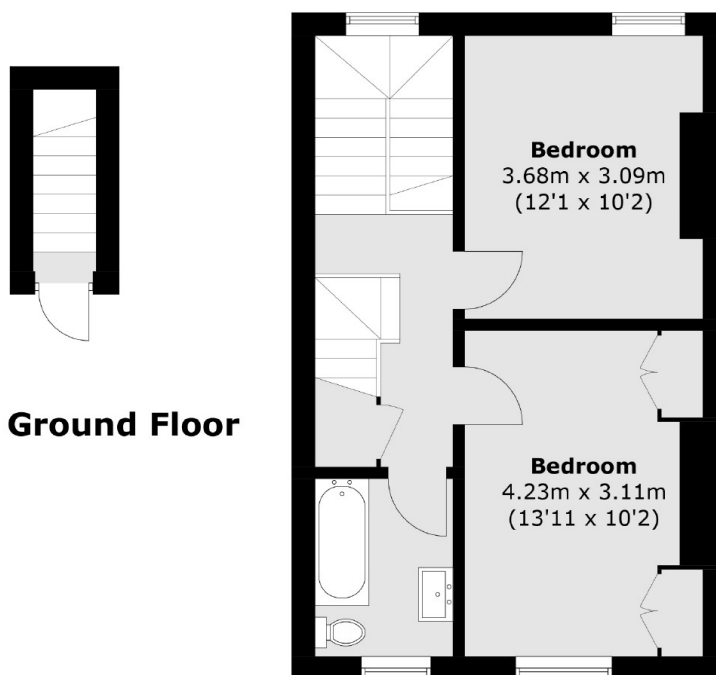
- Split Level Apartment
- Two Double Bedrooms
- Open Plan Kitchen
- Light and Airy Lounge
- Modern Bathroom Suite
- Popular Location



Stanley Road, Teddington, TW11



Second Floor



Ground Floor

First Floor

Total area (approx.): 73.5 sq. m (791.1 sq. ft)
(Excluding Eaves)