



Waldegrave Road, TW11

£999,950

Dexters



Waldegrave Road, TW11

This pretty Victorian home, full of original features, located in the heart of Teddington. This home will be hard to walk away from with a gorgeous large mature garden.

The through reception has a bay window and an original feature fireplace, perfect for a cosy real fire. There are high ceilings and original stripped floors, The second reception room has doors leading onto the garden.

There is a kitchen/breakfast/dining room to the rear of the property which has access onto the garden. The garden is a huge selling point; it is beautiful with mature trees and plants, it is not over looked and has plenty of space for a garden room. There is also potential to extend the ground floor STPP.

On the first floor there are three bedrooms, all full of natural light along with a family bathroom.

Waldegrave Road is a turning off Teddington High Street with plenty of shops/ bars and restaurants. A great position if you need transport links with Teddington mainline station close by and plenty of bus routes.

Features

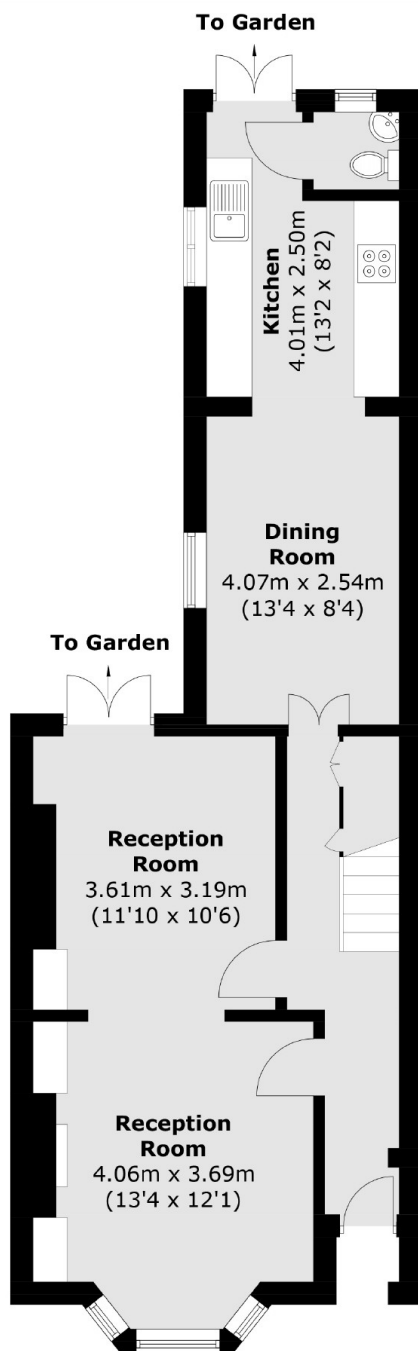
- Victorian
- Large Garden
- Excellent Location
- School Catchment
- Period Features
- Potential To Extend



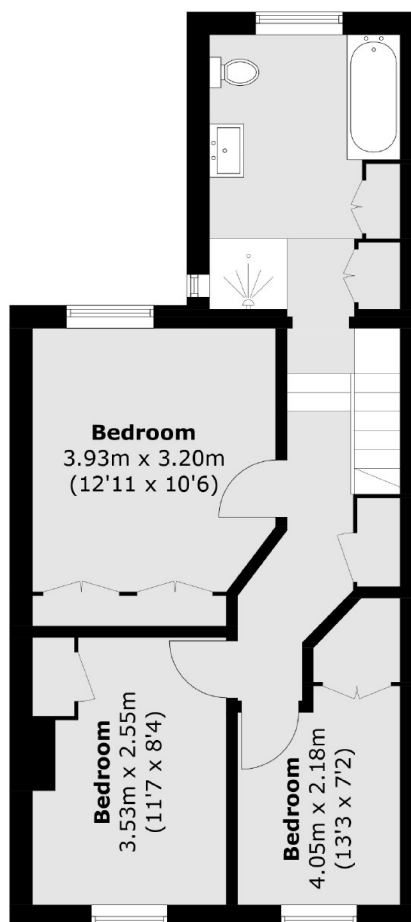




Waldegrave Road, Teddington, TW11



Ground Floor



First Floor

Total area (approx.): 102.6 sq. m (1,104.3 sq. ft)