



Bushy Park Road, TW11

£985,000

Dexters



Bushy Park Road, TW11

This beautifully presented Victorian home is located in this popular position close to transport links and schools. There are three bedrooms and a gorgeous rear garden.

Enter into the hallway and into a through reception room which can be open plan or separated if preferred. The front reception has a wood burning stove and the second half of this room is perfect for the dining room which flows onto the kitchen.

The modern shaker style kitchen has a granite worktop and plenty of storage with space for all appliances. The garden is wonderful with a patio and large lawn, it feels very secluded. There is potential to extend on the ground floor STPP.

Over the first and second floors there are three bedrooms; two bedrooms on the first floor with a family bathroom. On the top floor there is a further double bedroom with a Juliet balcony and en suite shower room.

Bushy Park Road is a turning from Kingston Road or Fairfax Road with access to an orchard at the end of Bushy Park Road and bridge access to Bushy Park. Teddington High Street, mainline station and The River Thames are all close by.

Features

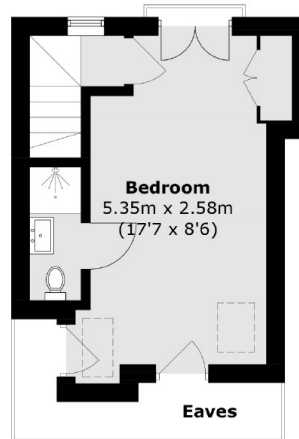
- Popular Location
- Three Bedrooms
- Two Bath/Shower Rooms
- Wood Burning Stove
- Excellent Catchment
- Large Garden



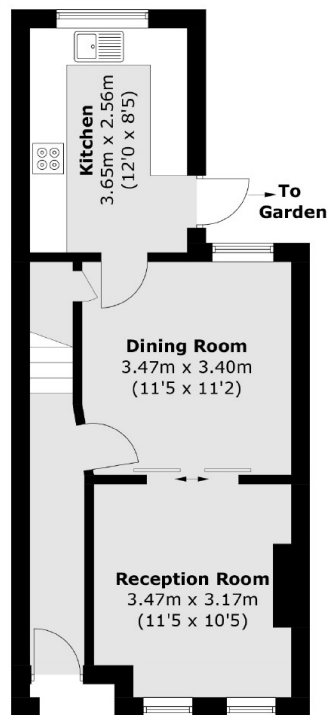




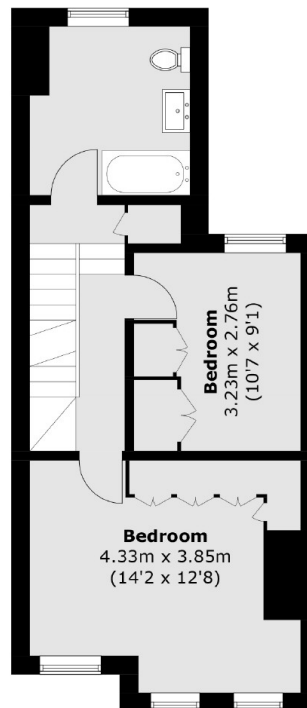
Bushy Park Road, Teddington, TW11



Second Floor



Ground Floor



First Floor

Total area (approx.): 100.2 sq. m (1,078.4 sq. ft)
(Excluding Eaves)