



## Cambridge Road, TW11

£1,450 Per calendar month

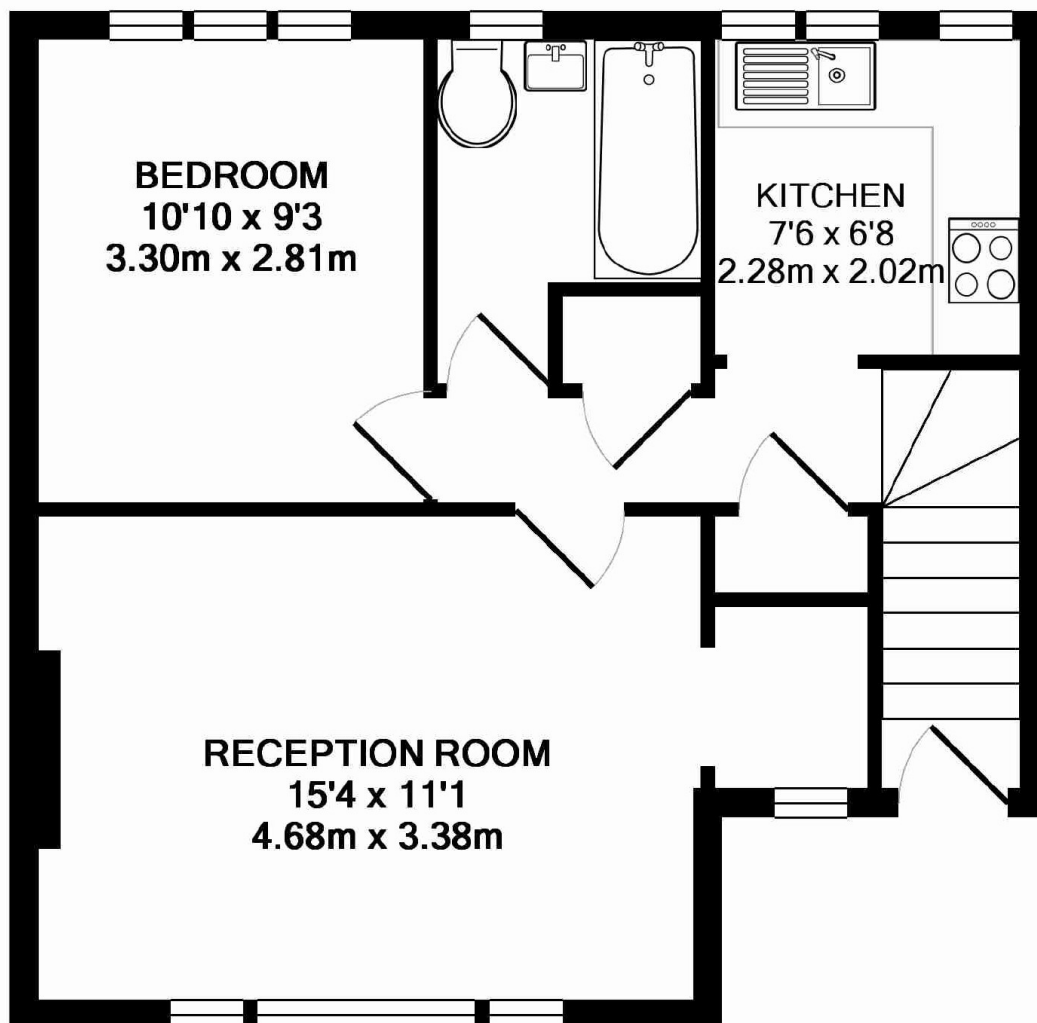
This one bedroom garden flat is located just off Teddington High Street and available to move into straight away so that you can enjoy the summer in your own garden.

Cambridge Road is a turning off Teddington High Street. You cannot beat this location for shops, bars, restaurants and transport links via Teddington train station. Bushy Park and the River Thames are within easy reach.

### Features

- Private Garden
- Central Location
- Ample Storage
- Double Bedroom
- Bright And Spacious
- Loft Storage

# Cambridge Road, Teddington, TW11



## CHERRYWOOD CLOSE TW11 TOTAL APPROX. FLOOR AREA 472 SQ.FT. (43.8 SQ.M.)

All measurements taken to RICS Guidelines for Gross Internal Area. Whilst every attempt has been made to ensure the accuracy of the floor plan contained here, all measurements are approximate and no responsibility is taken for any error, omission or misstatement. This plan is for illustrative purposes only and should be used as such by any prospective purchaser. The services, systems and appliances shown have not been tested and no guarantee as to their operability or efficiency can be given.

Made with Metropix ©2015

# Dexters

Teddington  
61 High Street  
Teddington  
TW11 8HA  
Lettings  
020 8288 2900

Energy Rating: C. We aim to make our particulars both accurate and reliable. However they are not guaranteed; nor do they form part of an offer or contract. If you require clarification on any points then please contact us, especially if you're traveling some distance to view. Please note that appliances and heating systems have not been tested and therefore no warranties can be given as to their good working order.

 **RICS** Regulated  
Estate Agent  
and Letting Agent

dexters.co.uk