



**Park Road, KT1**

**£449,950**

**Dexters**



## Park Road, KT1

Located in a popular development is this spacious and bright two double bedroom apartment. The property further benefits from a communal gardens and ample parking.

The entrance hallway is spacious with plenty of storage and leads to all rooms. The 14ft reception room is light and ideal for relaxing and dining.

The modern kitchen with a wooden work top provides access to a terrace and fire escape leading to the communal gardens. Both of the bedrooms are generous double rooms with storage.

This development has a shortcut to Hampton Wick station and this development offers stunning communal gardens with plenty of residents parking.

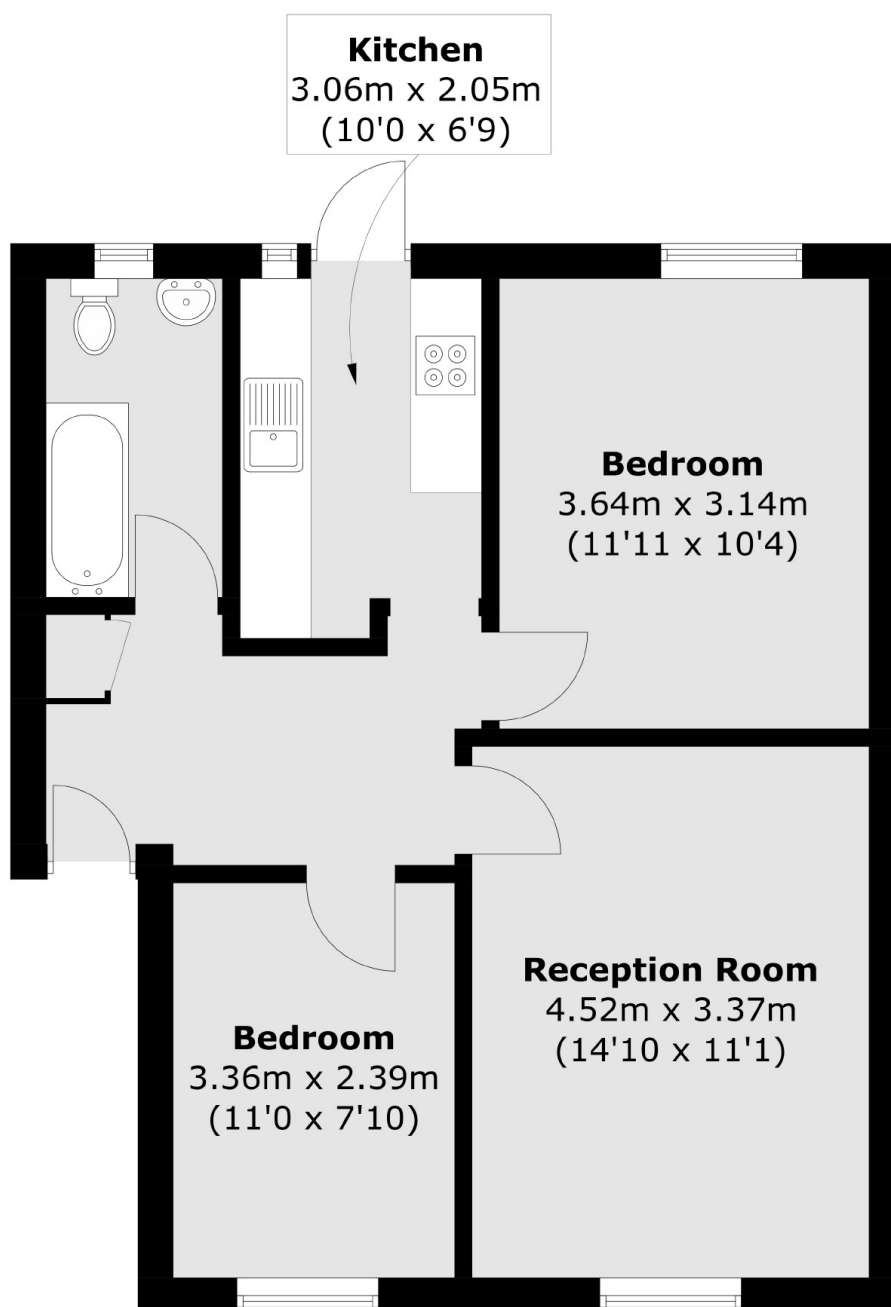
Park Court is located off Park Road, with easy access to Hampton Wick mainline station and a quarter of a mile from Kingston town centre and next to Bushy Park.

### Features

- Two Double Bedrooms
- Excellent Location
- Immaculate Condition
- West Facing Balcony
- Parking
- Communal Gardens



# Park Road, Kingston Upon Thames, KT1



Total area (approx.): 55.7 sq. m (599.5 sq. ft)