



Twickenham Road, TW11

£2,395 Per calendar month

Dexters



Twickenham Road, TW11

This two double bedroom flat is situated in this popular riverside development. The flat benefits from stunning communal grounds leading onto the river, underground parking and a garage.

Situated on the first floor, the entrance leads into the hallway. There is a family bathroom, a second double bedroom and the master bedroom has great views with an en suite bathroom.

The spacious reception room has floor to ceiling windows with views over the communal gardens and the river plus access onto the private balcony.

The private communal grounds are beautifully maintained.

Stoneydeep is just off Twickenham Road. Teddington mainline station and Teddington high street with its array of local shops, bars and restaurants is only half a mile away.

Features

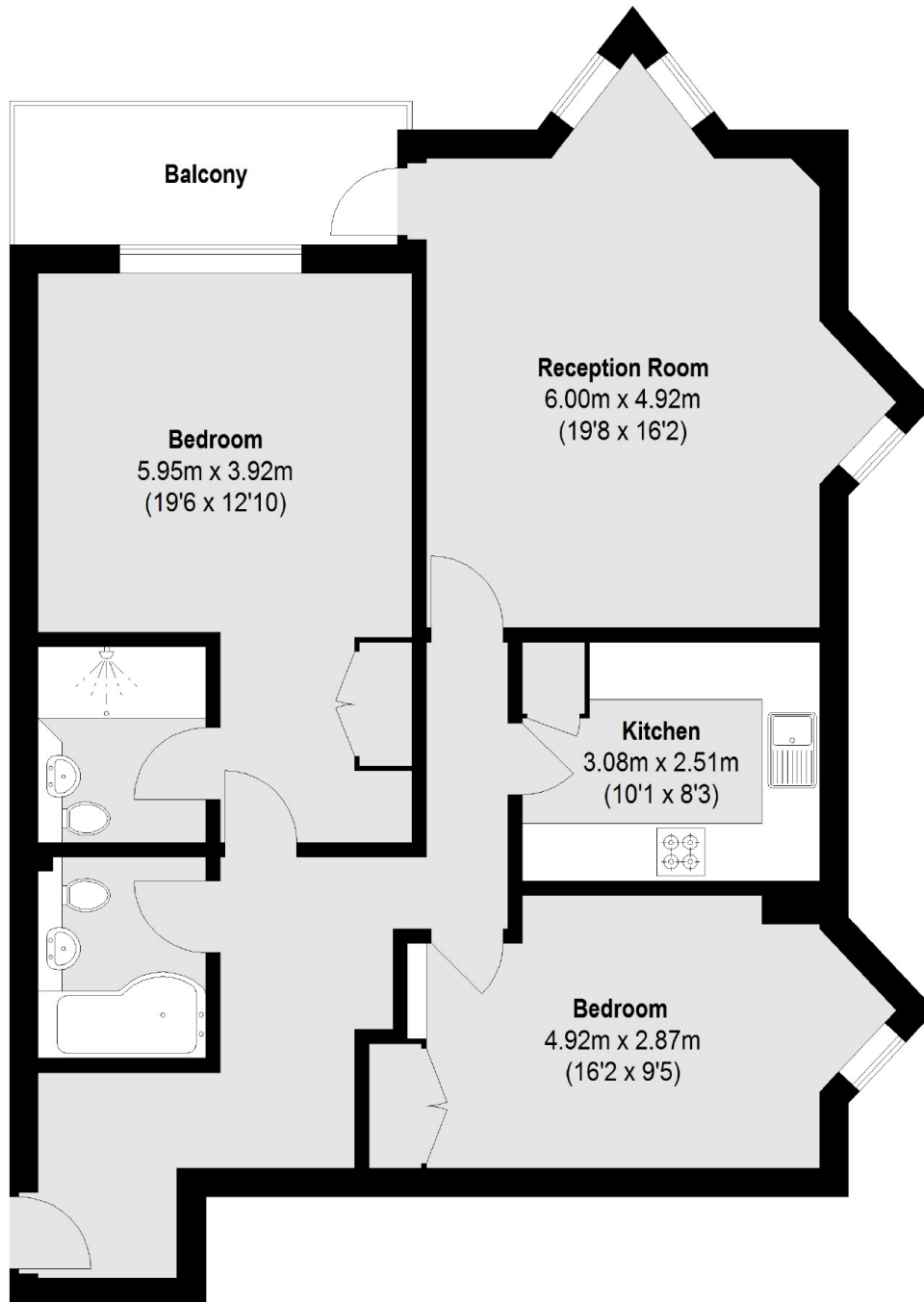
- Two Double Bedrooms
- Two Bathrooms
- Underground Parking
- Garage
- Balcony
- Communal Grounds







Twickenham Road, Teddington, TW11



Total area (approx.): 85.41 sq. m (919 Sq. ft)
Balcony: 5.82 sq. m (63 Sq. ft)