



## High Street, KT1

£1,495 Per calendar month

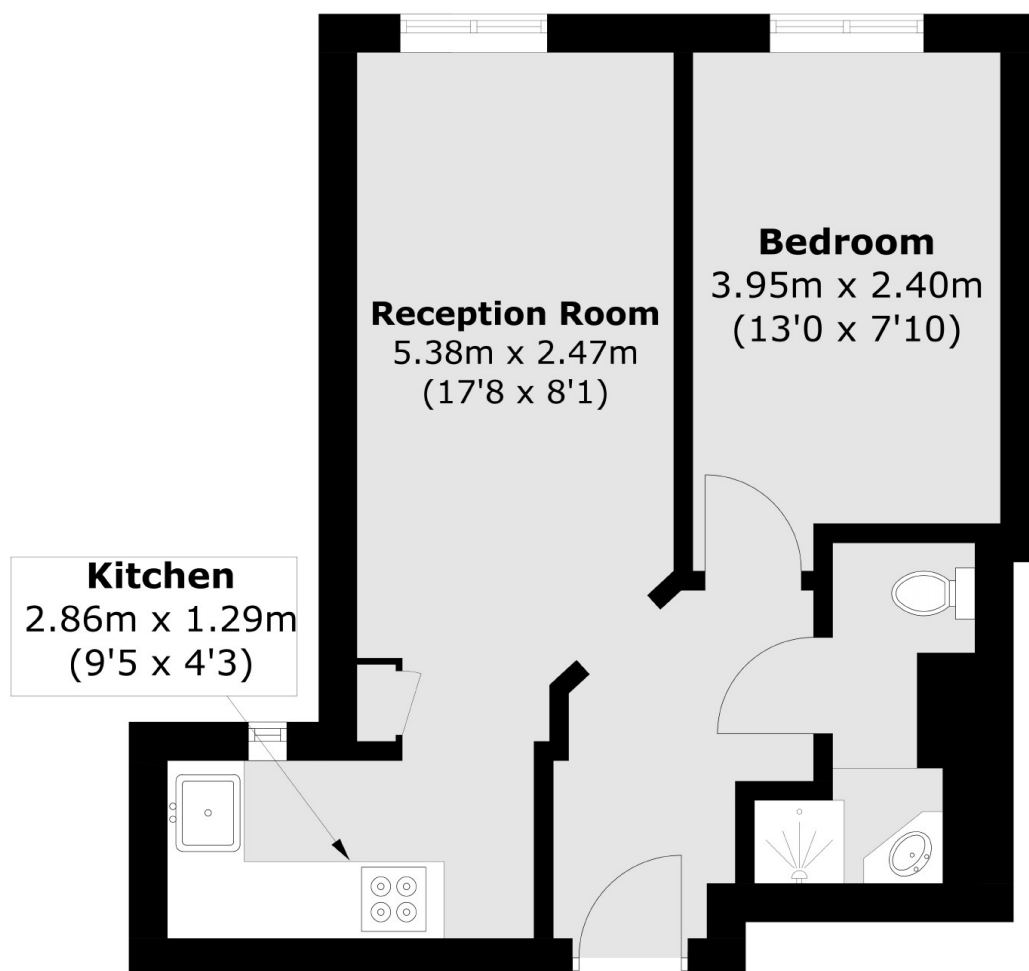
Situated moments from Hampton Wick train station, this stylish one double bed roomed apartment is located on the first floor of this Period Conversion. Key features include wood flooring throughout, a modern kitchen and bathroom and is centrally located.

Centrally located in the hustle and bustle of Hampton Wick high street, the property is less than a 1/4 of a mile to Hampton Wick train station and just over half a mile to Kingston town centre - perfect for late night shopping!

### Features

- Period Conversion
- First Floor
- Wood Flooring Throughout
- Modern Bathroom Suite
- Stylish Interior
- Central Location

# High Street, Kingston Upon Thames, KT1



Total area (approx.): 35.4 sq. m (381.0 sq. ft)