



Manor Road, TW11

£1,795 Per calendar month

A rare opportunity to view this characterful cottage; a hidden gem just off Teddington High Street in a secure gated location with off street parking. The unique property is offered in excellent condition being newly decorated with a large double bedroom and a private secluded garden, this is one not to miss out on!

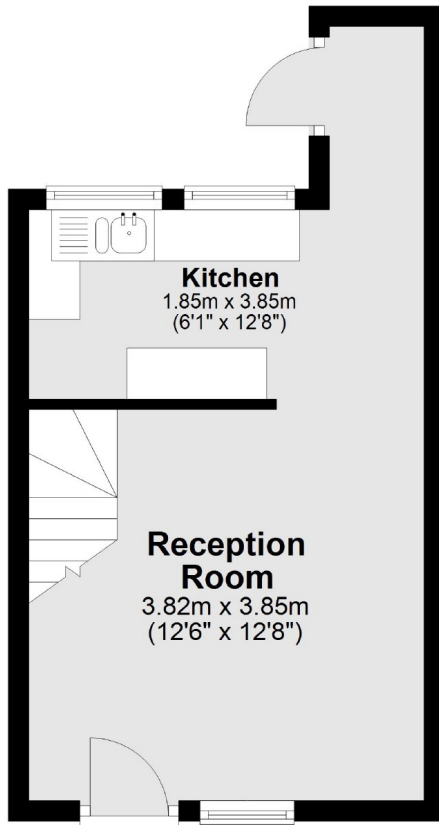
Manor Road is an excellent location for shops, schools, bars, restaurants and transport links via Teddington train station. Bushy Park and The River Thames are also within easy reach.

Features

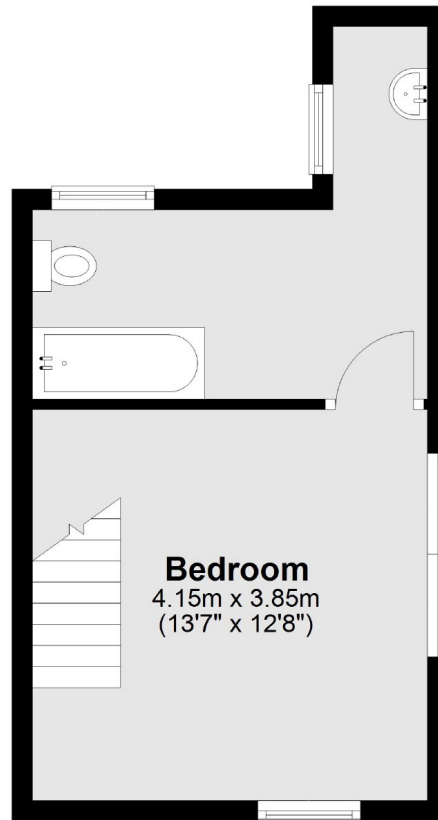
- Cottage
- One Double Bedroom
- Newly Decorated
- Secure and Gated Off Street Parking
- Large Secluded Garden
- Close To The High Street

Manor Road, Teddington, TW11

Ground Floor



First Floor



Total area: approx. 47.7 sq. metres (513.3 sq. feet)