



Blandford Road, TW11

£529,950

Dexters



Blandford Road, TW11

With views directly across Royal Bushy Park this split level maisonette offers over 840sq ft along with a garage and generous communal gardens.

Enter via your own private front door. The internal stairs lead up to a large reception room where you are greeted by a stunning direct view across Bushy Park which is very rare. With large windows overlooking the gardens and park, this room is flooded with natural light and warmth. This room flows onto the modern, well-equipped kitchen.

Another staircase leads to the top floor where there are two generous double bedrooms, the master capturing the picture perfect park views. The second good size double bedroom has the benefit of fitted storage. There is a modern bathroom.

There is direct access to substantial communal gardens at the front and back of the building. Here you can entertain family and friends and enjoy your own spot in the sunshine.

Blandford Road is located moments from Bushy Park and half a mile from Teddington mainline train station and town centre. Hampton Hill High Street is also close by along with good transport links.

Features

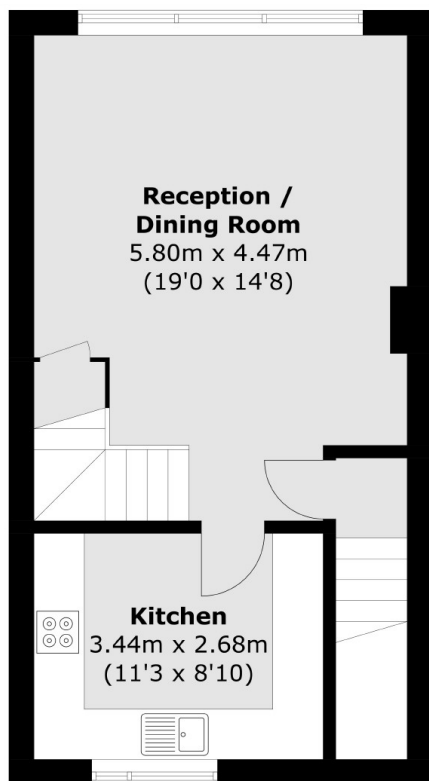
- Split-Level
- Maisonette
- Two Double Bedrooms
- Garage
- Communal Gardens
- Royal Park Views



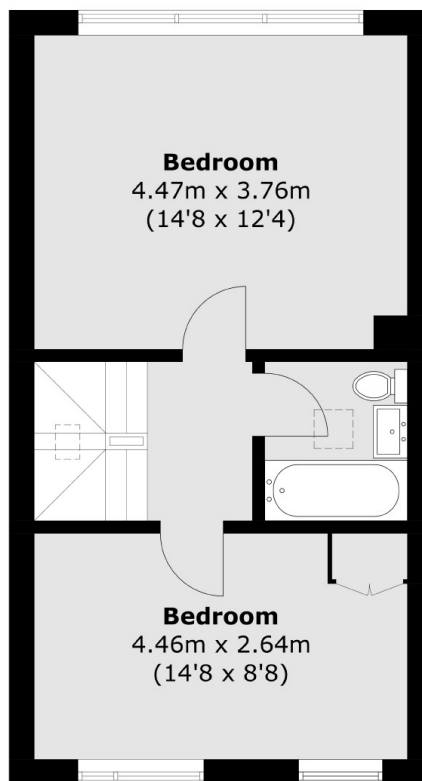




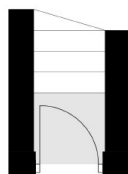
Blandford Road, Teddington, TW11



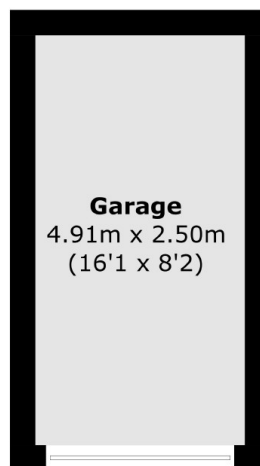
First Floor



Second Floor



Ground Floor



**(Not Shown In Actual
Location / Orientation)**

Total area (approx.): 78.4 sq. m (843.9 sq. ft)
Garage (approx.): 12.2 sq. m (131.3 sq. ft)