



Hampton Road, TW11

£499,950

Situated in exclusive and popular gated development. We are delighted to offer this stunning apartment which is offered in excellent condition throughout. The spacious apartment has two double bedrooms and allocated parking.

Millwood House is location on Hampton Road which is excellent for transport links. Both Hampton Hill and Teddington High Streets are easy to reach with shops and restaurants. Bushy Park and the river Thames are within walking distance too.

Features

- No Onward Chain
- Gated Development
- First Floor
- Two Double Bedrooms
- Spacious Reception Room
- Allocated Parking



Hampton Road, TW11

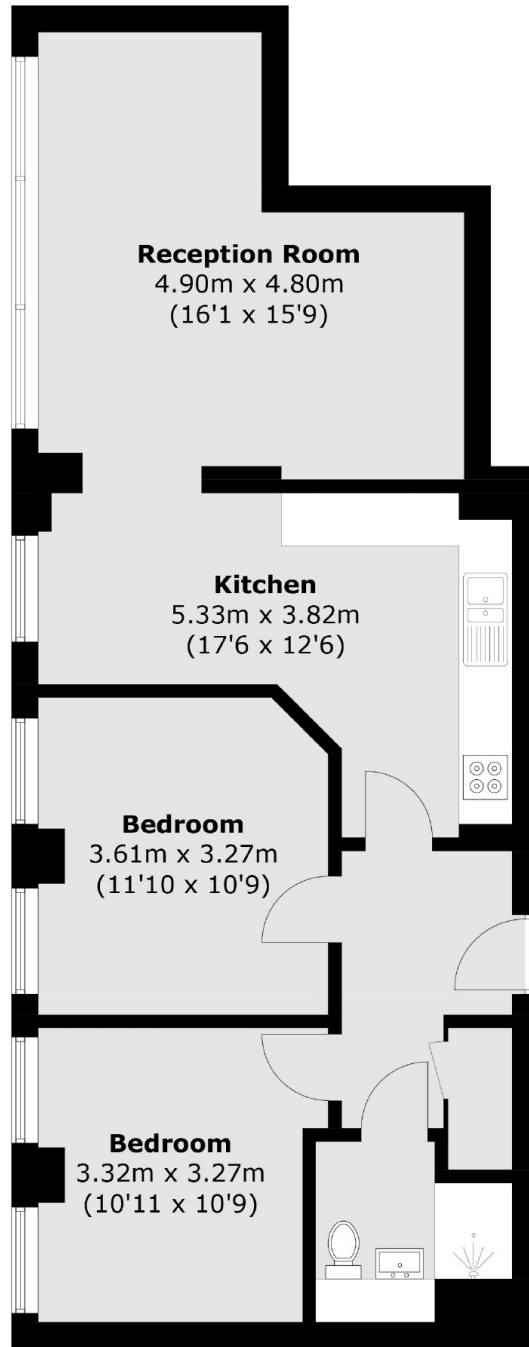
You are instantly impressed by this beautiful building, with communal grounds to the rear. Entering the flat from the first floor there are two double bedrooms, both room have large arched windows letting in lots of natural light.

The reception is an impressive 16ft which again is flooded with natural light with space for living and dining, from this room you can access the modern kitchen. The kitchen has a sleek finish with integrated AEG appliances, Quooker boiling system and fitted wine fridge. Completing the property is a smart bathroom.

The development offers allocated parking.



Hampton Road, Teddington, TW11



Total area (approx.): 70.5 sq. m (758.9 sq. ft)