



## High Street, KT1

£3,395 Per calendar month

A spacious five bedroom family home with a spectacular master suite and luxury bathroom, fully fitted kitchen, separate dining and reception area, plus a private courtyard garden.

This charming development is on Hampton Wick High Street and set back from the River Thames. The location is ideally positioned near the market town of Kingston upon Thames and Bushy Park.

### Features

- Five Bedrooms
- Three Bathrooms
- Grade II Listed Building
- Excellent Location
- Courtyard Garden



## High Street, KT1

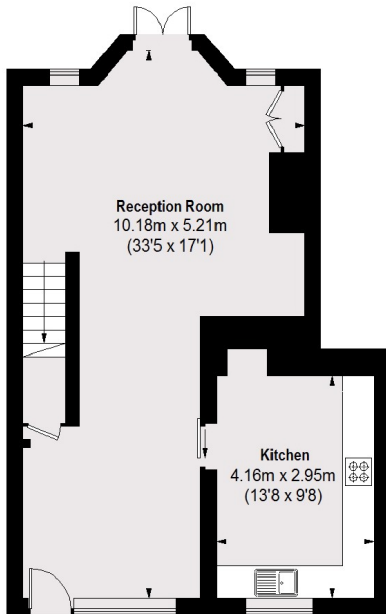
This well presented house set over three floors boasts 1,776 sq.ft. (165 sq.m.) offering plenty of space for any family. The ground floor opens to a reception, dining room, and a bespoke fully fitted kitchen.

To the first floor you will find two double bedrooms, a spacious third bedroom and a family bathroom. Finally the top floor consists of a sumptuous master suite with a luxury en suite bathroom and an additional generous sized en suite bedroom.

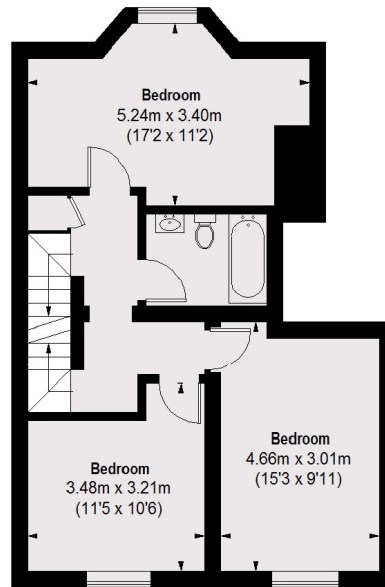
The dining room leads out onto a beautiful private courtyard garden that is not overlooked.



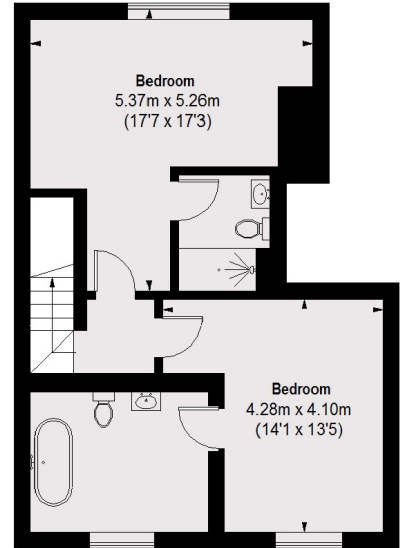
# High Street, Kingston Upon Thames, KT1



GROUND FLOOR



FIRST FLOOR



SECOND FLOOR

TOTAL APPROX. FLOOR AREA  
1791 SQ. FT. (166.37 SQ. M.)