



Stanley Road, TW11

£1,495 Per calendar month

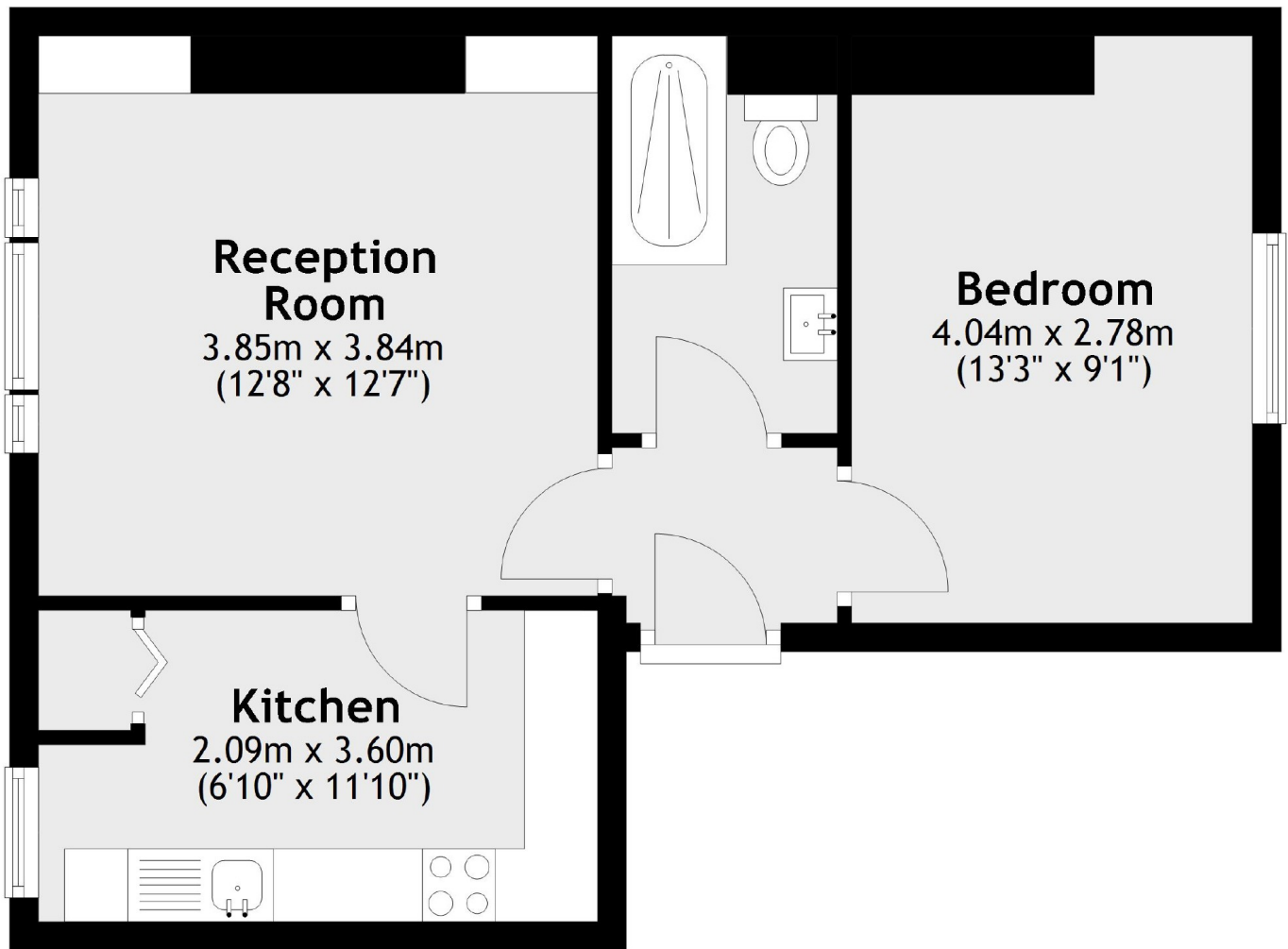
A fantastic first floor conversion flat located within this attractive Victorian building in the heart of Teddington, this light and airy apartment is modern throughout with a newly fitted bathroom and many period features.

This conversion is at the Broad Street end of Stanley Road and is within half a mile walk to Teddington train station. As well as the shops, bars and restaurants of Broad Street. Bushy Park is also close by.

Features

- One Double Bedroom
- Period Conversion
- Large Living Space
- Separate Kitchen
- Newly Fitted Bathroom
- Popular Location

**Stanley Road,
Teddington, TW11**



Total area: approx. 41.5 sq. metres (447.2 sq. feet)