

Waldegrave Road, TW11

£2,595 Per calendar month

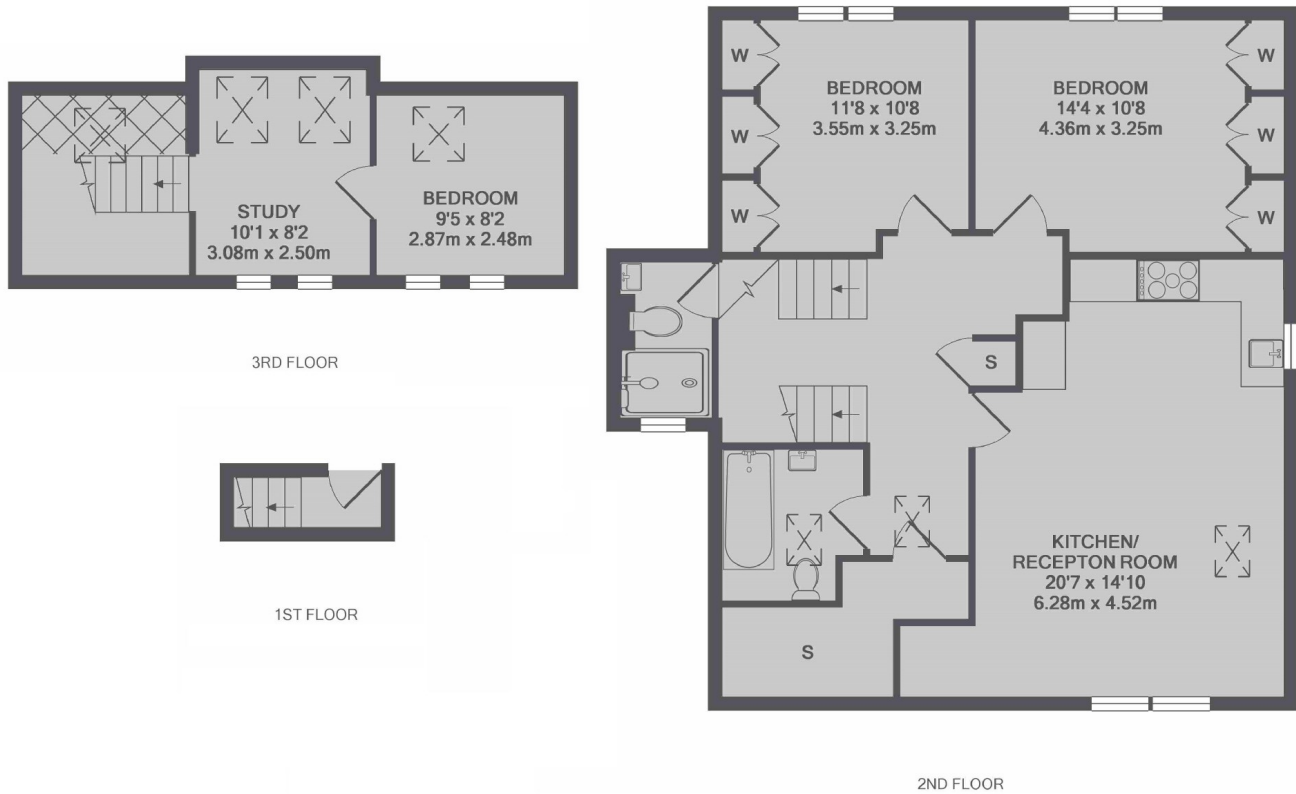
We think this three bedroom apartment is rather impressive. Split over two floors, with two luxurious bathrooms, contemporary finishes through out, the only thing missing here is a loving tenant.

Teddington is the perfect place to call home. Bushy Park is the ideal green haven to escape to on the weekends, the high street is filled with retail favourites, unique boutiques, artisan cafés and great transport links.

Features

- New Converted Apartment
- Spacious Living Room
- Open Plan Kitchen Suite
- Three Double Bedrooms
- Study/Dressing Room
- Allocated Parking Space

Waldegrave Road, Teddington, TW11



TOTAL APPROX. FLOOR AREA 1120 SQ.FT. (104.0 SQ.M.)