



Connaught Road, TW11

£1,250,000

Dexters



Connaught Road, TW11

This pretty Victorian property is located in the popular Royal Roads, an excellent position for schooling and transport links. This traditional home has character with a modern and sophisticated finish.

The double reception rooms create a relaxing lounge with a Victorian feature fireplace leading onto a dining room. There is solid herringbone floor throughout. The dining room opens onto the recently finished kitchen/breakfast room.

This entire room measures over 17ft and creates the hub of the home and a real family/sociable living space. The recent extension with a pitched room makes this modern kitchen bright and spacious with shaker style units, a central island and sliding doors that lead onto the garden.

Over the first and second floors there are four double bedrooms. A newly fitted family bathroom to the first floor and a en suite shower room to the top floor. There are fitted wardrobes in two of the bedrooms and additional eaves storage.

Connaught Road is situated in the popular 'Royal' Roads, perfect for transport links. Use Teddington High Street and Hampton Hill High Street for shopping/coffee/dining with Bushy Park and The River Thames within easy reach.

Features

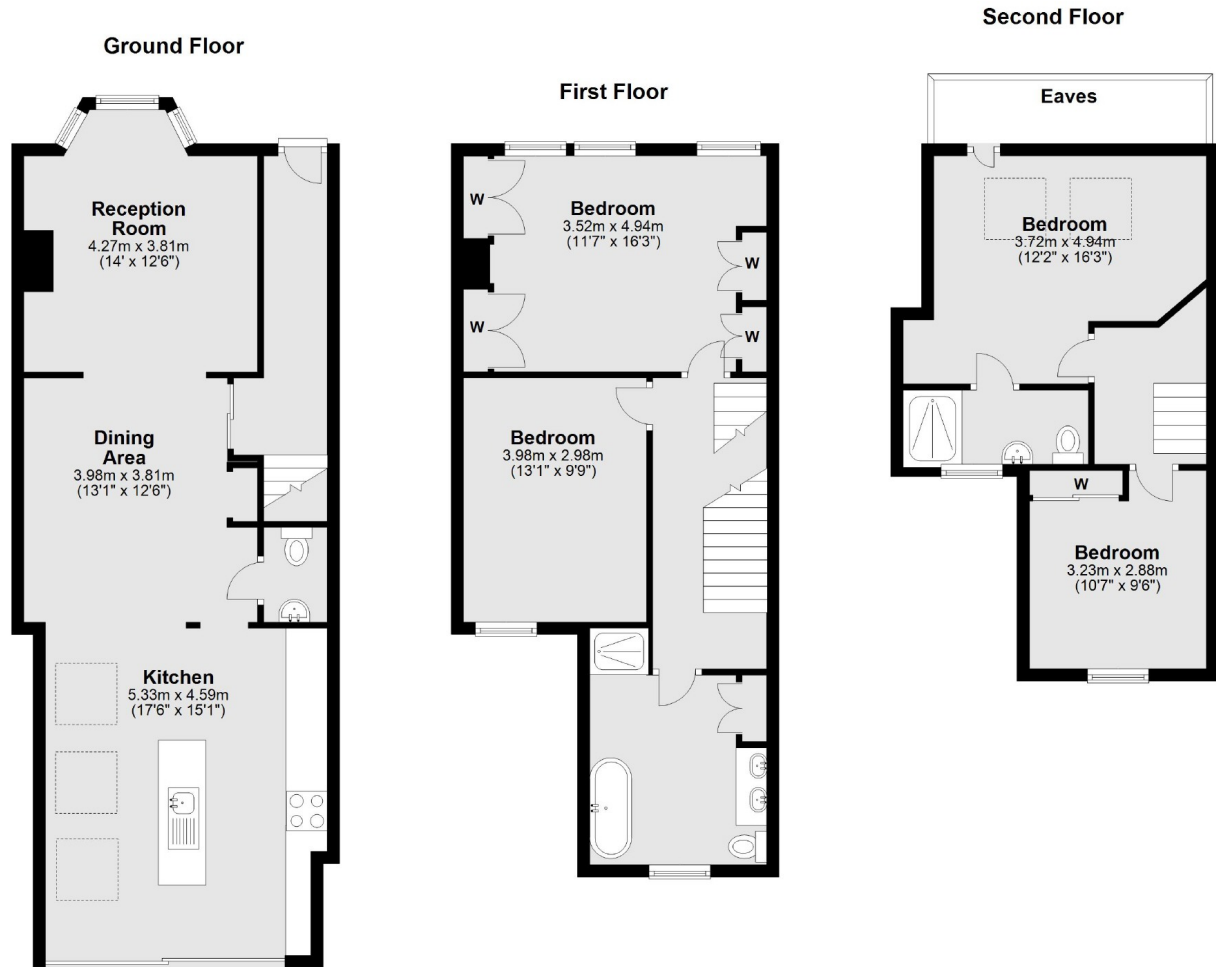
- Four Double Bedrooms
- Two Bath/Shower Rooms
- Cloakroom
- Garden
- Victorian Features
- Kitchen/Breakfast Room







Connaught Road, Teddington, TW11



Total area: approx. 145.3 sq. metres (1564.0 sq. feet)