



North Place, TW11

£649,950

Situated in the heart of Teddington this split level maisonette is in immaculate condition. There are two bedrooms, off street parking for two cars and a private garden accessed via the side.

North Place is located off of North Lane moments from Teddington's Broad Street with its many shops, bars and restaurants. Teddington mainline station is 0.4 Miles away and Bushy Park is 0.5 Miles away.

Features

- Private Entrance
- Long Lease
- Two Parking Spaces
- Garden
- Immaculate Presentation
- Central Location



North Place, TW11

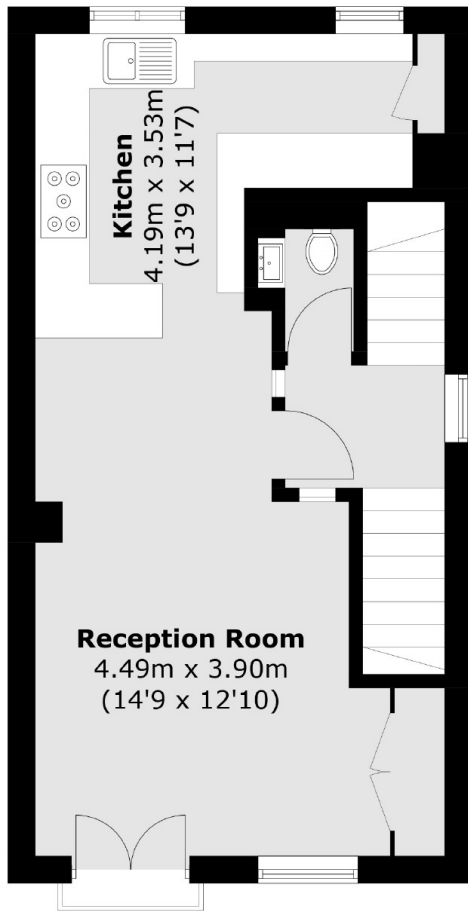
This flat is beautiful with a luxury finish. As you enter the apartment through your own private entrance there are stairs to the first floor. Here you will find an open plan living space, amazing for entertaining. The kitchen is modern with sleek white units and built in appliances, this room offers plenty of space for living and dining.

To the first floor there are two double bedrooms; both room have fitted storage. The master has an en suite bathroom and the second bedroom with an en suite shower room.

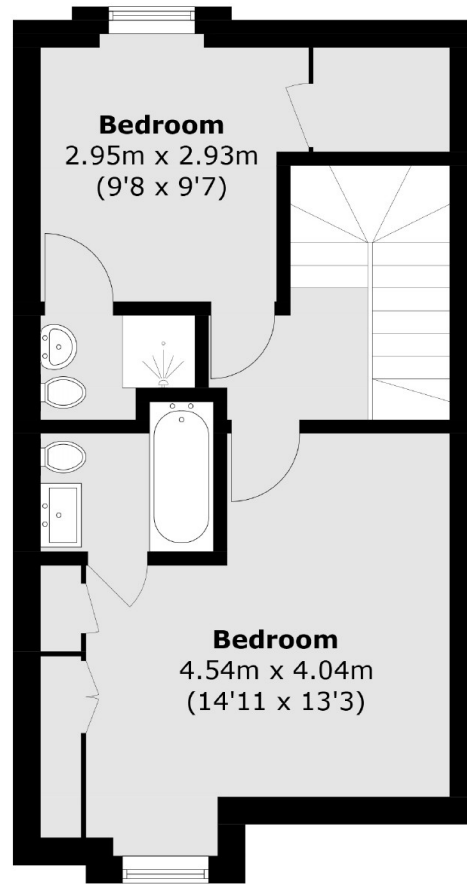
The private garden to the rear of the building is easy to maintain, a lovely area to enjoy the summer and BBQ's.



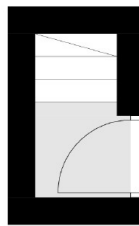
North Place, Teddington, TW11



First Floor



Second Floor



Ground Floor

Total area (approx.): 81.0 sq. m (871.8 sq. ft)