



## The Causeway, TW11

£625,000

This impressive first floor apartment is located in the heart of Teddington. The property offers in excess of 900square feet and is incredibly light and in excellent condition.

Located in the heart of Teddington; Bushy Park, the High Street, Teddington mainline station, and the riverside are all within easy walking distance. The area also offers an abundance of primary and secondary schools, both state and private education.

### Features

- Excellent Condition
- Central Location
- First Floor
- Lift service
- Two Double Bedrooms
- Allocated Parking



## The Causeway, TW11

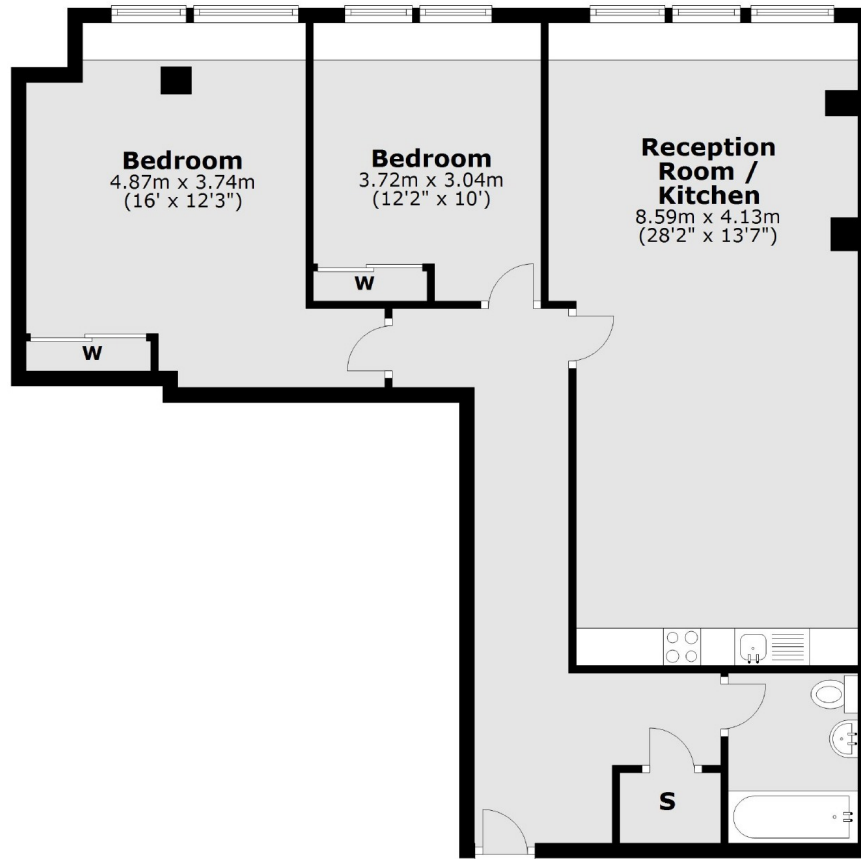
Entering into this apartment you are greeted with a spacious entrance hallway leading onto a modern family bathroom and fitted storage. The open plan kitchen living space is perfect for entertaining and offers integrated appliances with further storage. There are two further double bedrooms with fitted wardrobes.

The location will sell itself and this apartment is a must see! The building is secure with a video entry system, an allocated parking space, lift service and well presented communal areas.



# The Causeway, Teddington, TW11

## First Floor



Total area: approx. 84.3 sq. metres (907.3 sq. feet)