



Hampton Road, TW11

£579,950

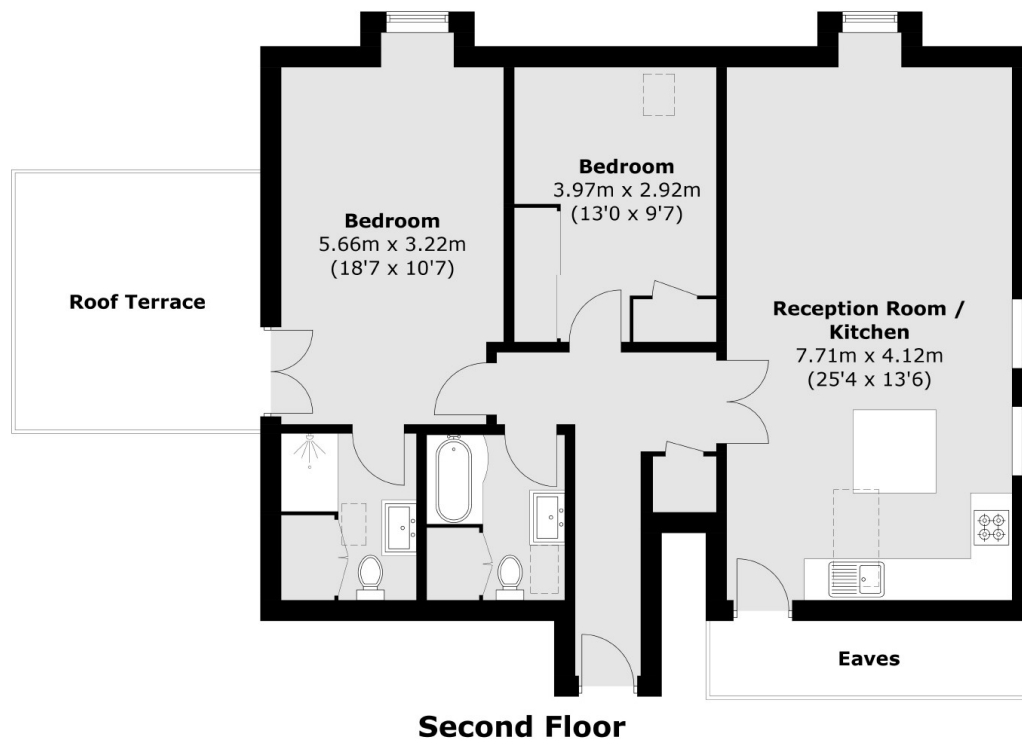
This penthouse apartment is located in a private gated development and has two double bedrooms, two bathrooms, a private roof terrace and allocated parking, what more could you ask for?

Hampton Road is excellent for transport links and if driving there is easy access to the M3. Both Hampton Hill and Teddington High Streets are easy to reach with shops and restaurants. Bushy Park and the River Thames.

Features

Stunning Penthouse Apartment
Two Double Bedrooms
Two Bathrooms (One En Suite)
Spacious Living Space
Private Roof Terrace
Allocated Parking

Hampton Road, Teddington, TW11



Total area (approx.): 82.1 sq. m (883.7 sq. ft)
Roof Terrace: 13.1 sq. m (141.0 sq. ft)
(Excluding Eaves)