



## Cambridge Crescent, TW11

£3,295 Per calendar month

Offered in the heart of Teddington this family home offers over 1200 sq ft, with three bedrooms and a lovely secluded garden, this is a must see!

Cambridge Crescent is a highly desirable residential street, only half a mile from Teddington train station and ideally placed for OFSTED outstanding schools. The River Thames and Bushy Park are close by and Teddington High Street can be accessed at the rear via Watts Lane which is excellent for shops, bars and restaurants.

### Features

- Three Bedrooms
- Eat-In Kitchen
- Great Condition
- Beautiful Garden
- Central Location
- Excellent School Catchment



## Cambridge Crescent, TW11

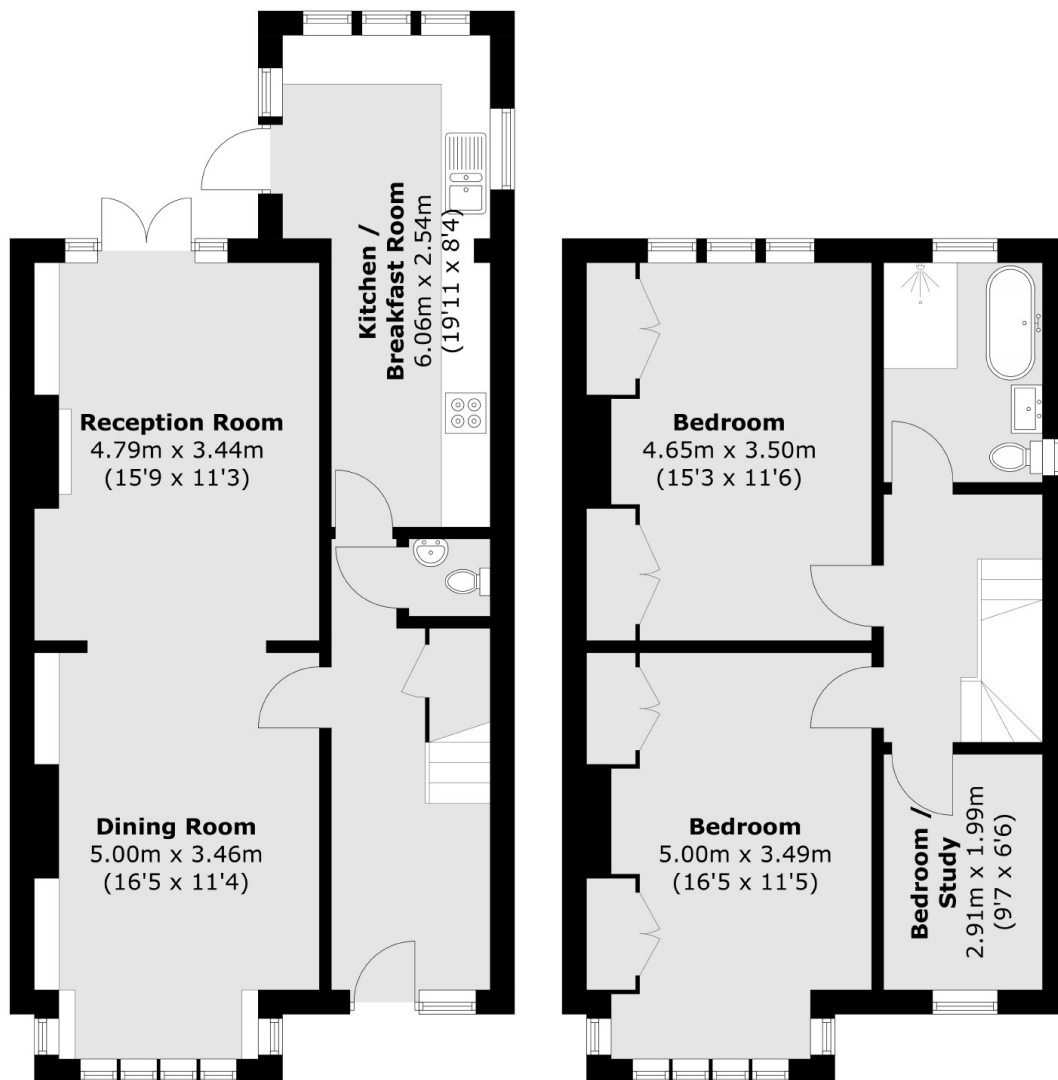
Enter into the hallway which leads to the through reception room which has an original open fireplace and the rear has double doors opening onto the garden.

The hallway also leads to the kitchen which has integrated appliances, plenty of storage space and a breakfast bar looking out onto the garden. The garden is secluded and easy to maintain.

There are three bedrooms on the first floor; two large bright double bedrooms with fitted wardrobes and the third which is a single bedroom along with a family bathroom.



# Cambridge Crescent, Teddington, TW11



**Ground Floor**

**First Floor**

Total area (approx.): 112.0 sq. m (1,205.6 sq. ft)