



Elmtree Road, TW11

£729,950

Dexters



Elmtree Road, TW11

****Viewings starting 20th April**** This Edwardian three bed home offers a wealth of history and after recent redecoration throughout, this beautiful home is a must see. Offering a bright and open living space and generous size kitchen leading onto a secluded sunny garden with a garden studio.

The double reception offers plenty of space for living and dining which leads through to the kitchen. The garden can also be accessed from both the dining area and kitchen through French doors. The kitchen is spacious with space to make this a kitchen/breakfast room plus there is plenty of storage with space for appliances including a dishwasher.

To the first floor there are three good sized bedrooms and a family bathroom. The garden is easy to maintain and perfect for a BBQ, it is secluded and also a sun trap! The garden studio is ideal for working from home or this could be a gym as it is very flexible; some people have connected this to the house to create a fourth bedroom. In addition from the studio, there is access to a secure rear alley.

Elmtree Road is a turning off Somerset Road, ideally located for outstanding schools. Train and bus transport links are close by plus easy access into Teddington High Street, Bushy Park and The River Thames.

Features

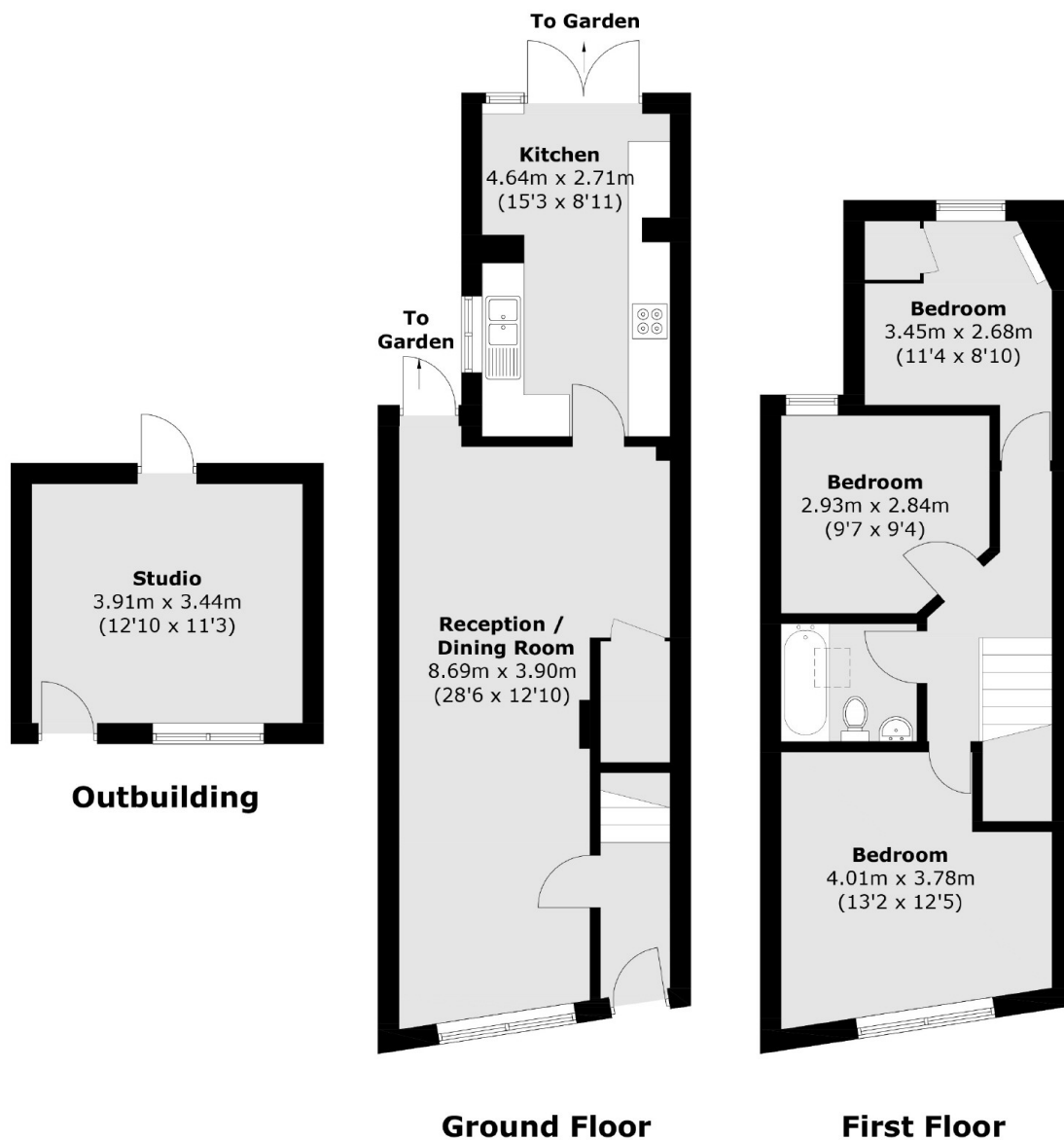
- Three Bedrooms
- 28ft Reception Room
- West Facing Garden
- Garden Studio
- Kitchen/Breakfast Room
- No Onward Chain







Elmtree Road, Teddington, TW11



Total area (approx.): 86.4 sq. m (930.0 sq. ft)
Outbuilding: 13.7 sq. m (147.5 sq. ft)