



## Waldegrave Road, TW11

£289,950

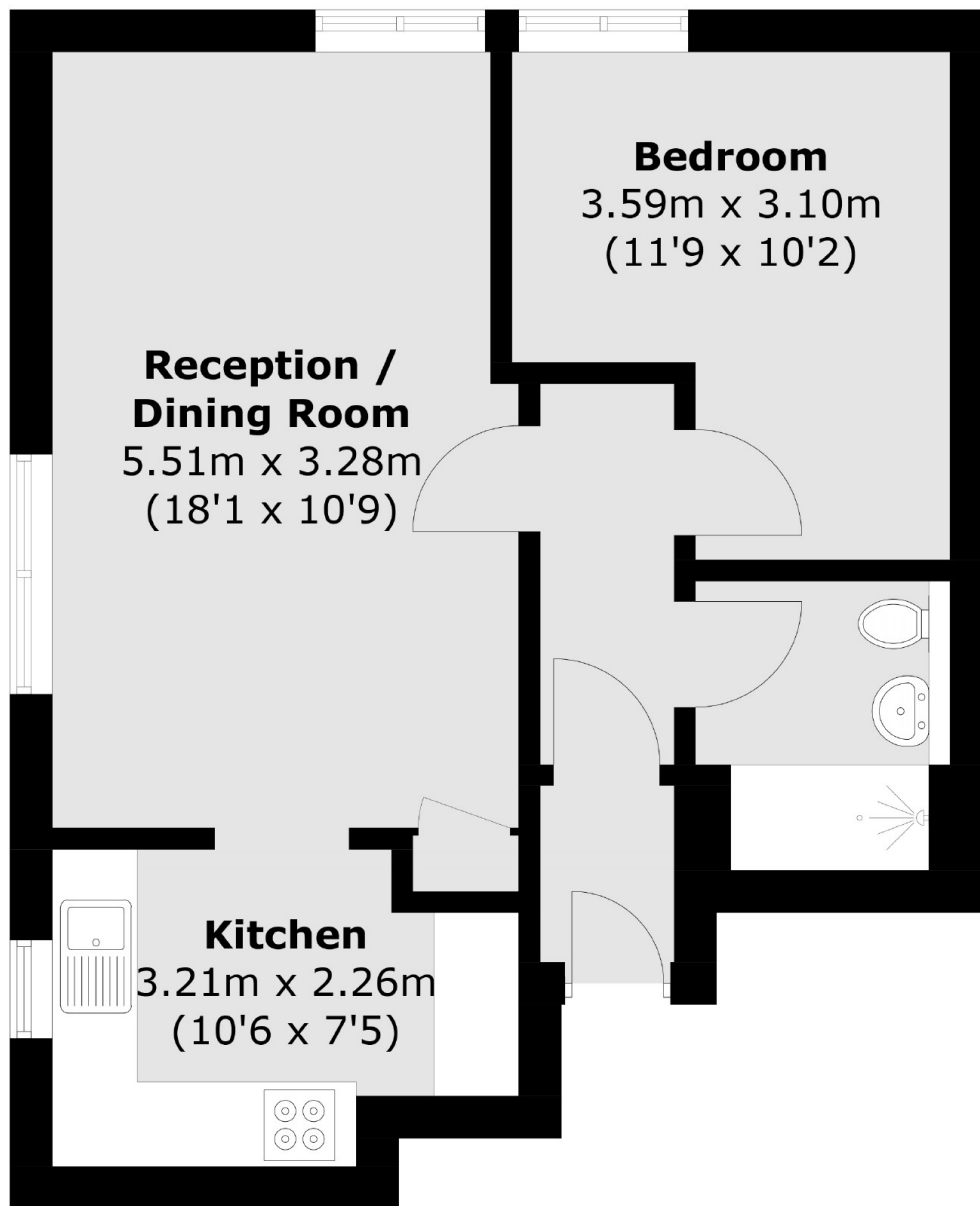
Situated in the heart of Teddington this apartment is perfect as a first time buy or an investment. With a spacious double bedroom and an 18ft reception leading onto a modern kitchen. Completing the accommodation there is a bathroom.

Rutherford House is located at the top of Waldegrave Road by Teddington High Street. The perfect spot for access to Teddington Station, Bushy Park, The River Thames and all that Teddington has to offer.

### Features

- One Double Bedroom
- No Onward Chain
- Bright & Spacious
- Excellent Location
- Well Presented
- Reception/Dining Room

# Waldegrave Road, Teddington, TW11



Total area (approx.): 44.0 sq. m (473.6 sq. ft)