



## York Road, TW11

£4,250 Per calendar month

A beautifully presented, four bedroom Victorian property, with a south-facing garden on a highly sought after road.

York Road is an ideal location a short walk from Teddington High Street and station, Fulwell mainline train station is also very close, as are a number of popular bus routes and excellent schools.

### Features

- Beautifully Presented
- Four Bedrooms
- Plantation Shutters
- Central Location
- High Specification
- South Facing Garden



## York Road, TW11

This home has been carefully designed by the current owner and the thoughtful changes and attention to detail create space and light throughout. On the ground floor there is a spacious reception room with a feature fireplace, at the rear of the property is a modern eat - in kitchen with skylights and bi-folding doors leading onto the south facing garden. The extension to the ground floor creates impressive living space.

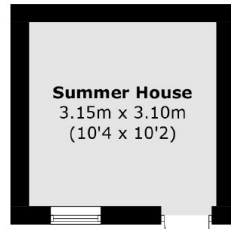
To the first floor there are two double bedrooms, one with built-in wardrobes and a modern family bathroom. On the top floor, you can create a home office to escape the hustle and bustle of family life or utilise the space as a dressing room. Additionally, the master bedroom with vaulted ceilings reaching the apex of the roof provides a sanctuary for parents alongside the stylish and contemporary freestanding oversized bathtub.

At the rear of the house is a beautiful landscaped garden with a patio outside the kitchen and outside storage.



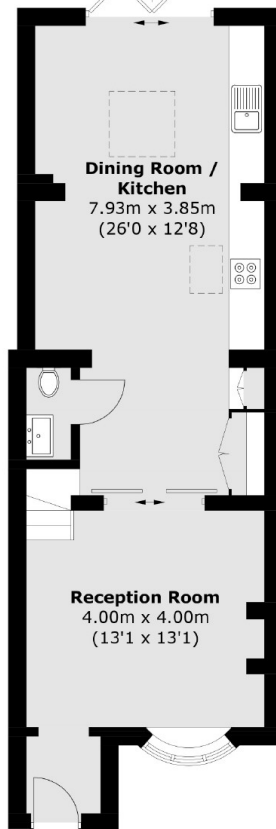


# York Road, Teddington, TW11

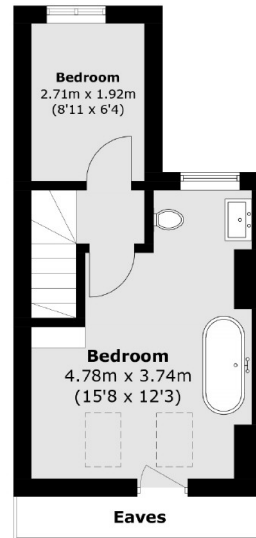


(Not Shown In Actual  
Location / Orientation)

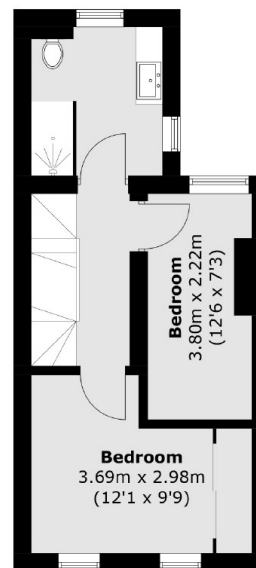
To Garden



**Ground Floor**



**Second Floor**



**First Floor**

Total area (approx.): 100.5 sq. m (1,081.9 sq. ft)  
(Excluding Eaves)

Summer House (approx.): 9.9 sq. m (106.6 sq. ft)