



Stanley Road, TW11

£1,995 Per calendar month

This stunning and spacious two bedroom house is offered in excellent decorative order throughout and it even has parking right outside.

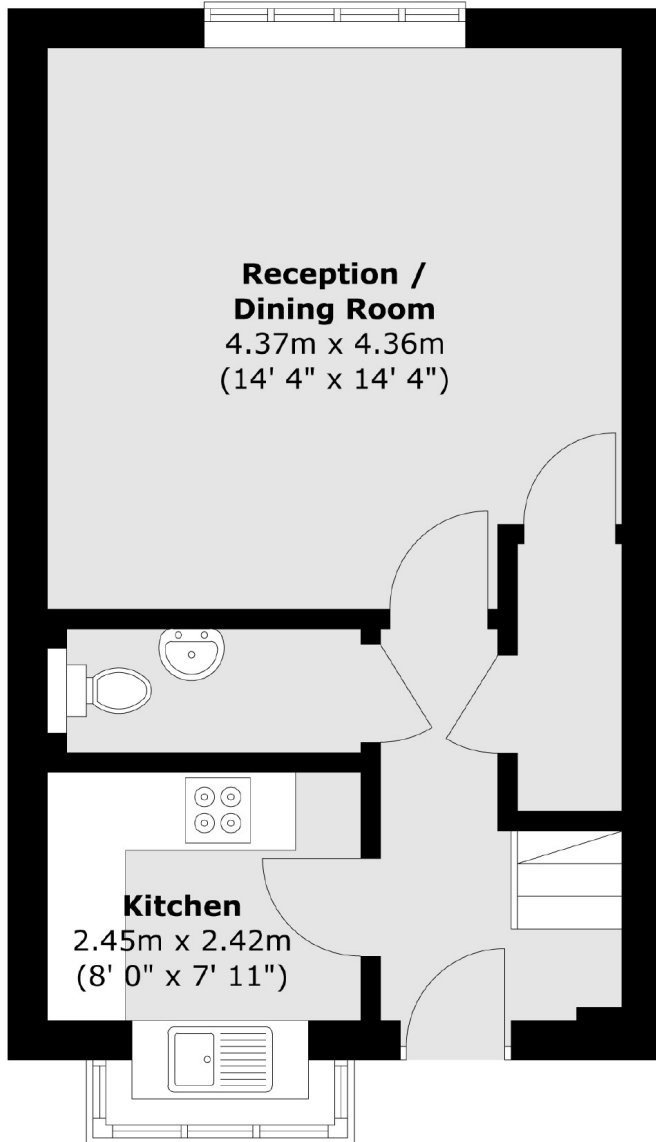
Stanley Road is just over half a mile to Teddington mainline station and just moments from Stanley Road's local shops and restaurants which are great for those last minute essentials.

Features

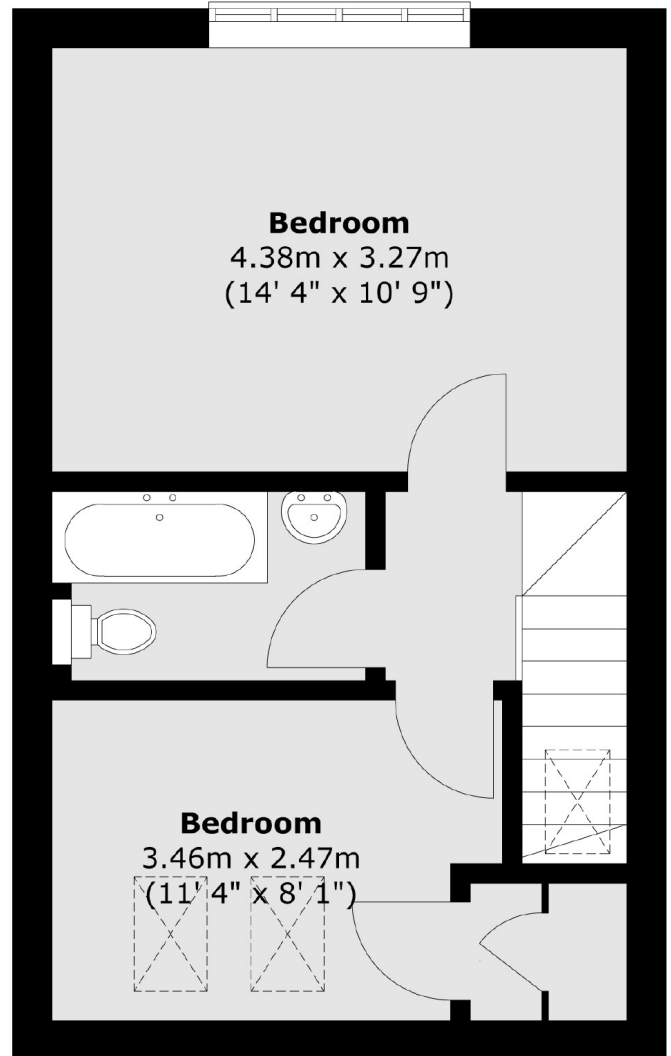
Modern Development
Two Double Bedrooms
Two Bathrooms
Spacious Living
Allocated Parking
Close To Transport

Stanley Road, Teddington, TW11

Ground Floor



First Floor



Total area (approx.) : 66.5 sq. m (716 sq. ft)