



Langdon Park, TW11

£1,575,000

Dexters



Langdon Park, TW11

Set in the historic grounds of Langdon Park, this is the original show homes, finished to a high standard with two parking spaces, a garage, residents gym, and a beautiful garden with a sheltered seating area.

With over 2500sq feet, the house is arranged over four floors and benefits from double aspect windows and is flooded with natural light. On the ground floor there is an integral garage, a cloakroom and a kitchen/breakfast room. This is fully integrated and has a dumbwaiter that services the first floor and doors opening onto the garden.

The first floor has a spacious and bright reception room and a formal dining room that can be used as a second reception room, there is a utility room. The master bedroom is on the second floor, benefiting from fitted wardrobes, views over the communal grounds and an en suite shower room. There are two additional bedrooms and another shower room on this floor, to the top floor there are two double bedrooms with air conditioning and a family bathroom with a bath and separate shower. Outside to the front there is off street parking for two cars. The South facing garden to the rear has side access and has been beautifully designed.

Set just off Kingston Road and under a third of a mile from Hampton Wick mainline station, Langdon Park is within easy access of Kingston and Reading town centres, Bushy Park and the River Thames.

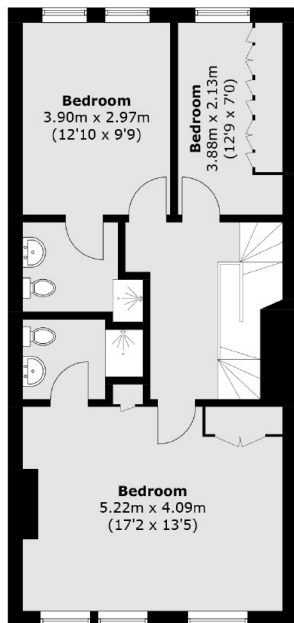
- Five Bedrooms
- South Facing Garden
- Garage & Driveway
- Three Bathrooms
- Two Reception Rooms
- No Onward Chain



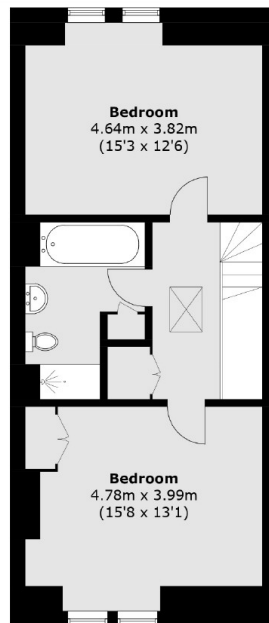




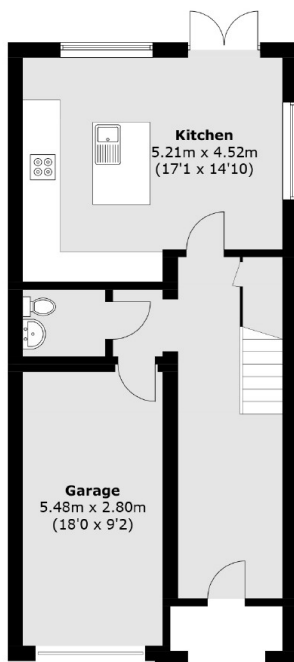
Langdon Park, Teddington, TW11



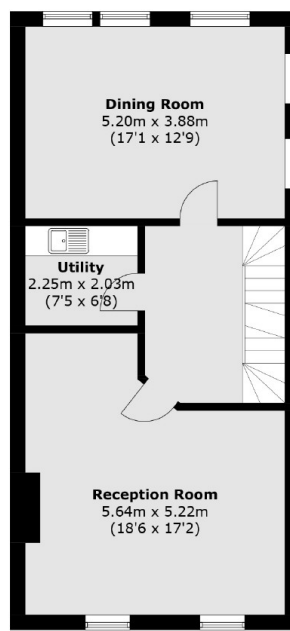
Second Floor



Third Floor



Ground Floor



First Floor

Total area (approx.): 235.5 sq. m (2,534.8 sq. ft)
(Including Garage)