



## Langdon Park, TW11

£2,495 Per calendar month

Situated on the second floor of this beautiful listed building, we are delighted to offer this stunning two bedroom apartment. This property is exceptionally bright with extensive storage and two bathrooms.

A short walk to Hampton Wick station with a direct link to Waterloo. Bushy Park, Kingston shopping centre and Riverside are all close by with lots of shops, restaurants and bars.

### Features

- Beautiful Listed Building
- Excellent Condition
- Two Double Bedrooms
- Two Bathrooms
- Allocated Parking
- Gym and Communal Grounds





## Langdon Park, TW11

The front entrance to the building leads to an impressive hallway and lift. The apartment has wood flooring throughout with carpet in the bedrooms.

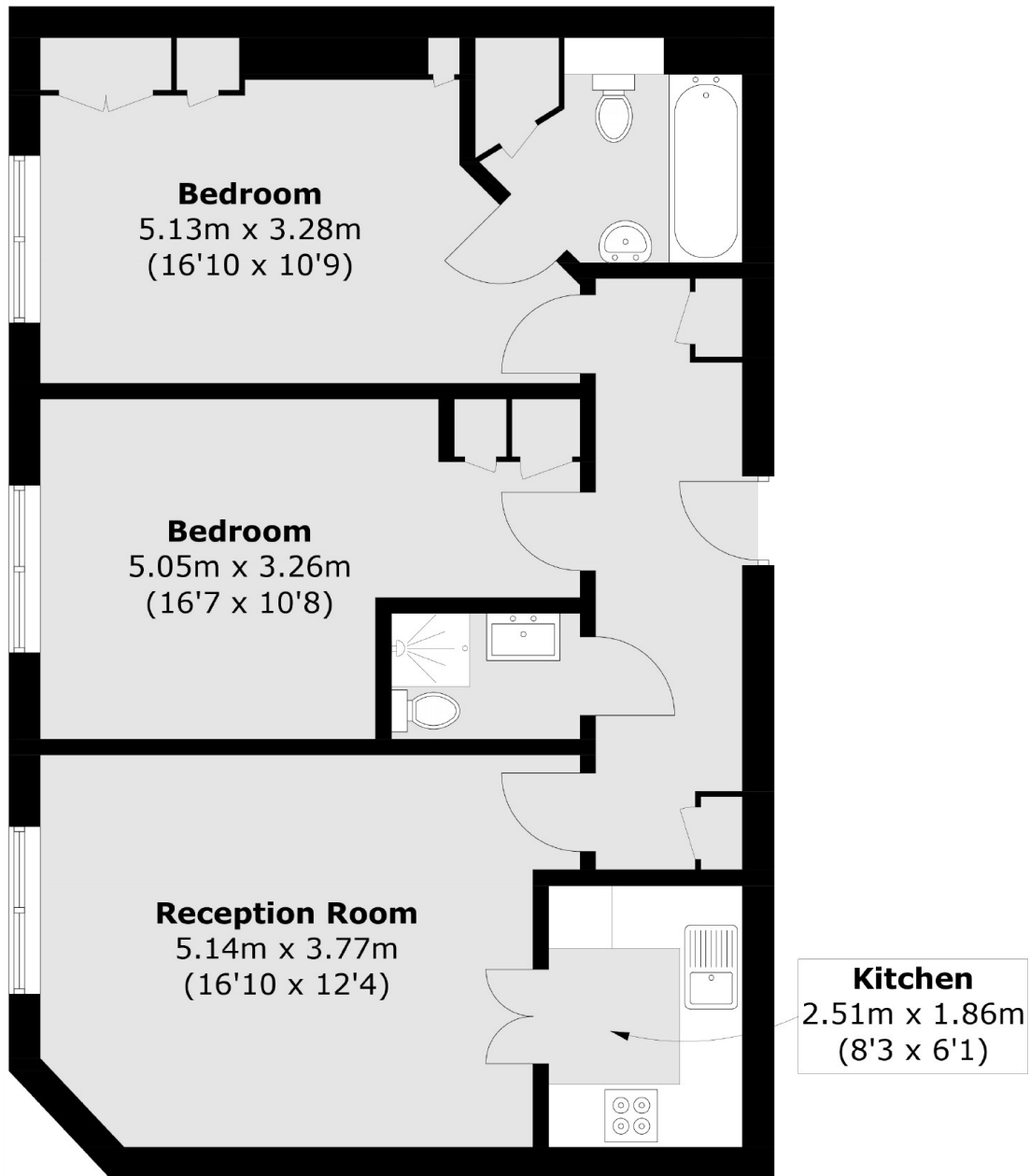
All the rooms lead off the hallway, the reception room has high ceilings and opens onto the kitchen. There are two double bedrooms and two bathrooms.

Also benefiting from the allocated parking at the front of the building, a private gym for residents only and well manicured grounds, this flat is a must see!





# Langdon Park, Teddington, TW11



Total area (approx.): 70.8 sq. m (762.1 sq. ft)