



## Elton Close, KT1

£399,950

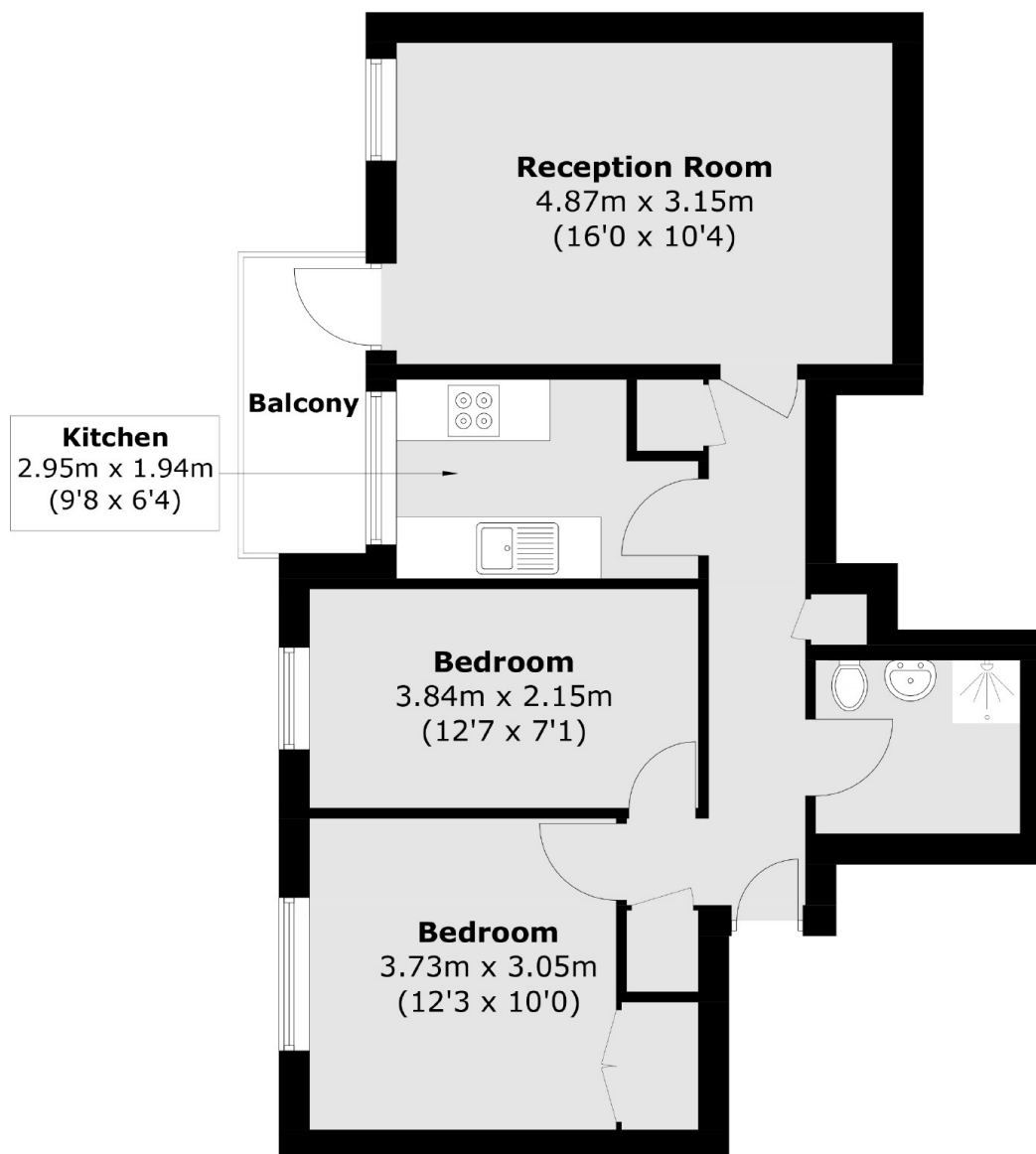
This second floor purpose built apartment is offered in excellent decorative order throughout. The property boasts two bedrooms a bright and spacious reception room opening onto private balcony. There are communal gardens, garages and off street parking.

Elton Close is situated off Upper Teddington Road, minutes walk to Hampton Wick station, local amenities and a short walk to Kingston town centre.

### Features

- Excellent condition
- Long Lease
- Low Service Charges
- Allocated Parking
- Private Balcony
- Two Bedrooms

# Elton Close, Kingston Upon Thames, KT1



## Second Floor

Total area (approx.): 51.6 sq. m ( 555.4 sq. ft)  
Balcony area : 3.5 sq. m ( 37.6 sq. ft)