



Wick Road, TW11

£925,000

This beautifully presented Victorian home is located in this popular position close to transport links and schools. There are three bedrooms and previous planning permission for a loft conversion.

Wick Road is a turning from Bushy Park Road or Kingston Road with access to an orchard at the end of Bushy Park Road and bridge access to Bushy Park. Teddington High Street, mainline station and The River Thames are all close by.

Features

- Victorian
- Three Bedrooms
- Excellent Location
- Well Presented
- Scope To Extend
- No Onward Chain



Wick Road, TW11

Enter into the hallway and into a through reception room, there is restored original wood floor. The living area has a bay window, a feature fireplace with built in storage surrounding and plantation shutters. The dining area leads onto the kitchen/breakfast room.

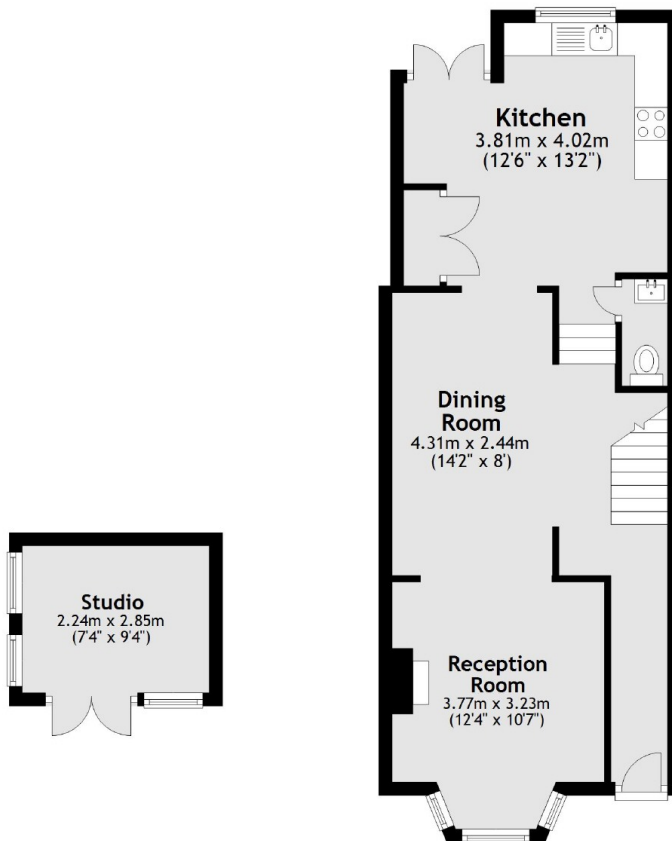
The modern shaker style kitchen with breakfast bar has plenty of storage and space for all appliances with french doors that lead onto the garden. The garden has a patio and lawn with a studio at the end of the garden.

There are three bedrooms to the first floor, the master has fitted wardrobes and there is a modern bathroom.

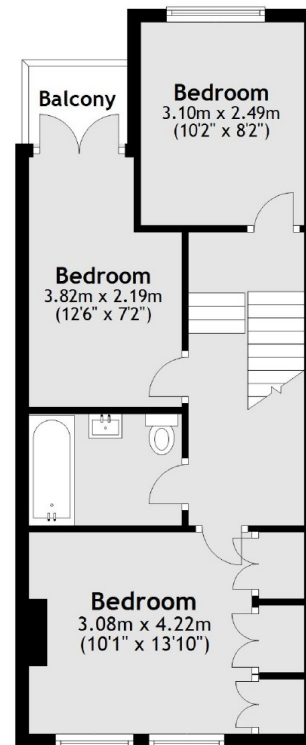


Wick Road, Teddington, TW11

Ground Floor



First Floor



Main area: Approx. 89.6 sq. metres (964.0 sq. feet)
Plus outbuildings, approx. 6.4 sq. metres (68.8 sq. feet)