



## Belvedere Close, TW11

£1,795 Per calendar month

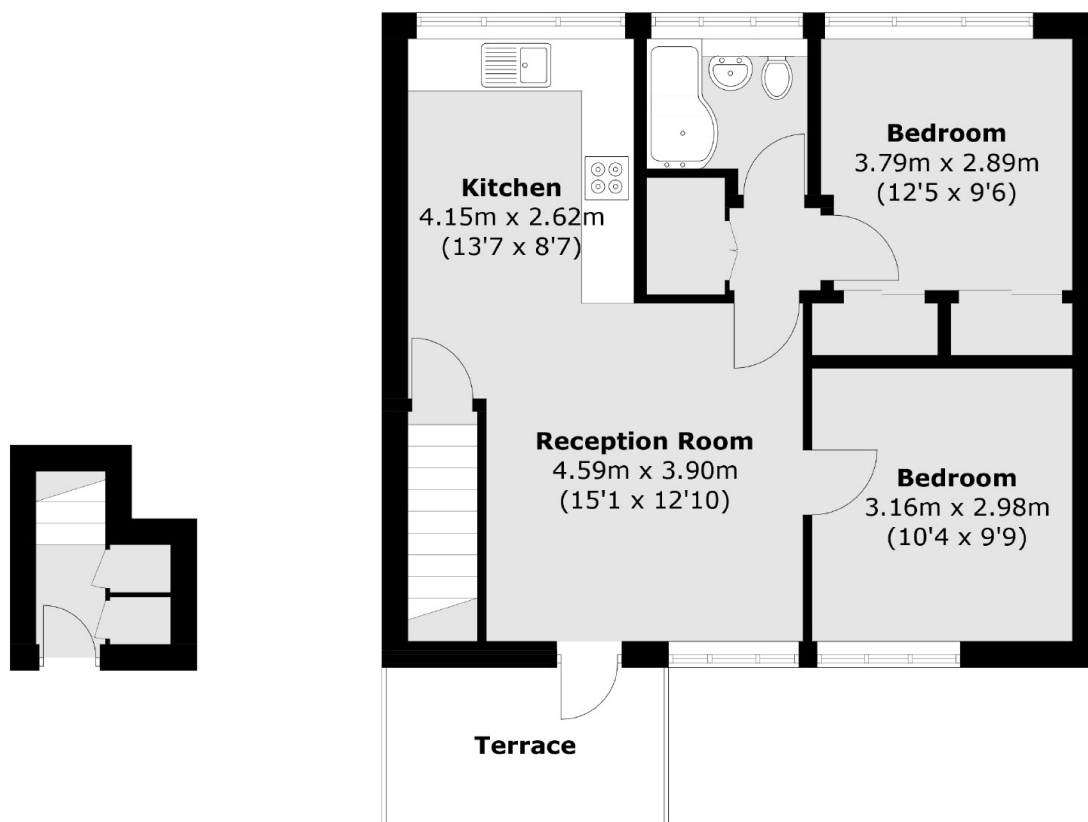
Set within a quiet cul de sac, is this two double bedroom apartment that has an open plan living space, a modern kitchen, private garden.

Belvedere Close is quiet cul de sac off Gloucester Road 0.4 miles distance to Broad Street and 0.7 miles distance to Teddington Mainline station along with easy access to Bushy Park.

### Features

- First Floor Apartment
- Two Double Bedrooms
- Modern Kitchen
- Private Garden
- Excellent Location
- Modern Bathroom

# Belvedere Close, Teddington, TW11



## Ground Floor

## First Floor

Total area (approx.): 55.9 sq. m (601.7 sq. ft)  
Terrace area : 5.8 sq. m (62.4 sq. ft)