



Twickenham Road, TW11

£1,700,000

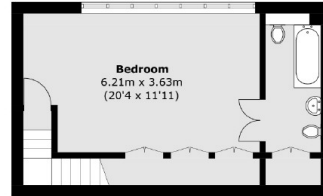
This large semi-detached 'Arts and Crafts' family home is offered to the market with no onward chain. The property has six bedrooms with off street parking and a large garage. The accommodation offers in excess of 3000 sq ft and is a must view!

Twickenham Road is located within close proximity to the River Thames, Teddington mainline station and Teddington high street with its array of local shops, bars and restaurants is only half a mile away.

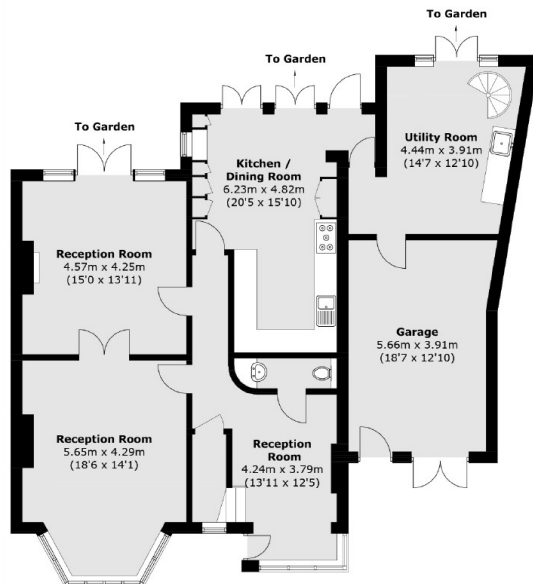
Features

- Garage
- Off Street Parking
- Large Garden
- Excellent Condition
- In Excess of 3000 sq ft
- Six Bedrooms

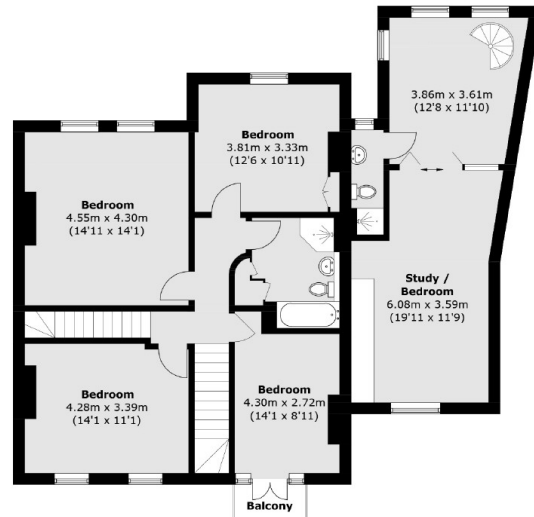
Twickenham Road, Teddington, TW11



Second Floor



Ground Floor



First Floor

Total area (approx.): 281.2 sq. m (3,026.8 sq. ft)
Balcony: 1.7 sq. m (18.3 sq. ft)