



## Victor Road, TW11

£400,000

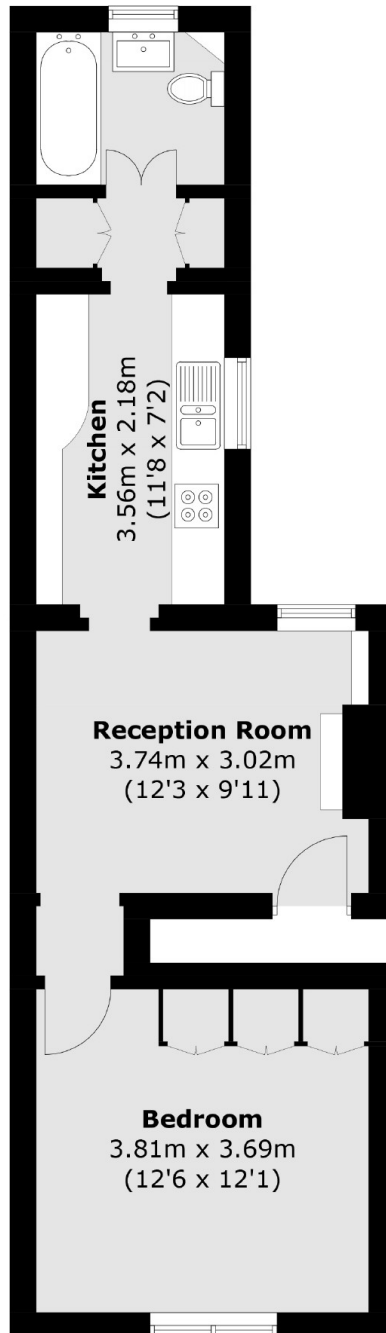
Located in a popular road close to Royal Bushy Park and all that Teddington has to offer. This flat is offered in immaculate condition throughout and it is a must view.

Victor Road is a turning off Stanley Road. This location is popular for schools, transport links into London, Bushy Park and The River Thames. Teddington High Street is also within easy reach.

### Features

- Top Floor
- Victorian
- Period Features
- Great Location
- High End Finish

# Victor Road, Teddington, TW11



Total area (approx.): 41.4 sq. m (445.6 sq. ft)