



**Latimer Road, TW11**

**£799,950**

**Dexters**



## Latimer Road, TW11

This Victorian home is stunning and located in a quiet cul-de-sac close to Teddington High Street, the station and proximity to an outstanding primary school.

This home is presented in immaculate condition offering plenty of period charm with a modern twist. The property has been cleverly extended to maximised the space. To the ground floor there is an impressive open plan kitchen/dining/reception room with herringbone wood flooring, skylights and bi-fold doors to the garden. Filled with natural light, it is a wonderful space for living and entertaining with shaker style units. Completing the ground floor there is a modern white bathroom with fitted storage.

On the first floor, the main bedroom has bespoke wardrobes and an en-suite shower room and there is a further double bedroom with fitted wardrobes.

To the rear the garden has a patio area, lawn and, studio room.

Latimer Road is a turning off Church Road. An excellent location for schools, transport links, shops, bars and restaurants. Bushy Park and The River Thames are close by.

### Features

- Victorian
- Garden Studio
- Two Bedrooms
- Two Bath/Shower Rooms
- Secluded Garden
- Immaculate Condition





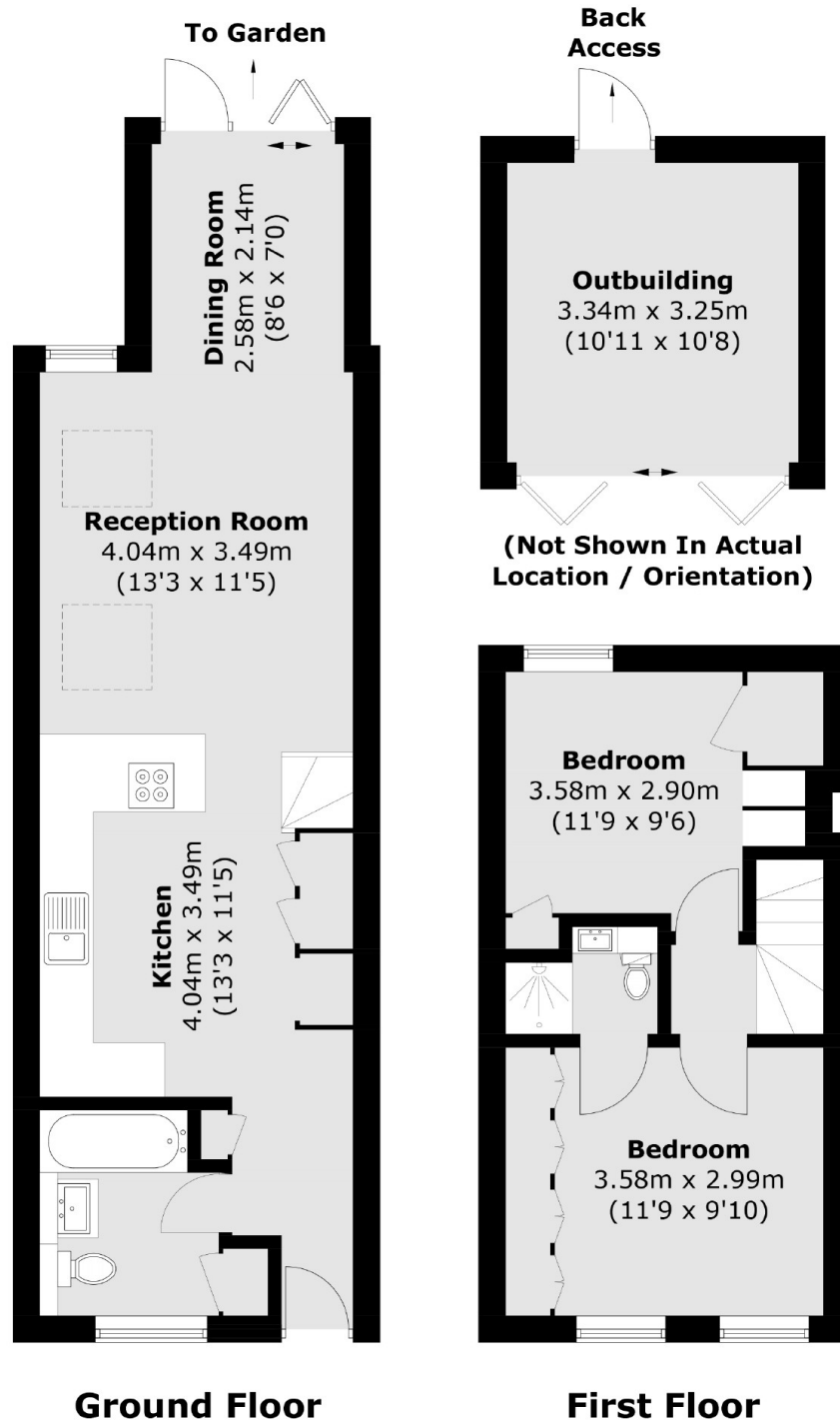








# Latimer Road, Teddington, TW11



Total area (approx.): 68.1 sq. m (733.0 sq. ft)  
Outbuilding (approx.): 11.5 sq. m (123.8 sq. ft)