



## Victor Road, TW11

£649,950

This three bedroom cottage is located in a sought-after location with a large garden. There are three bedrooms, two reception rooms and two bathrooms. This home offers potential to extend STPP and there is no onward chain.

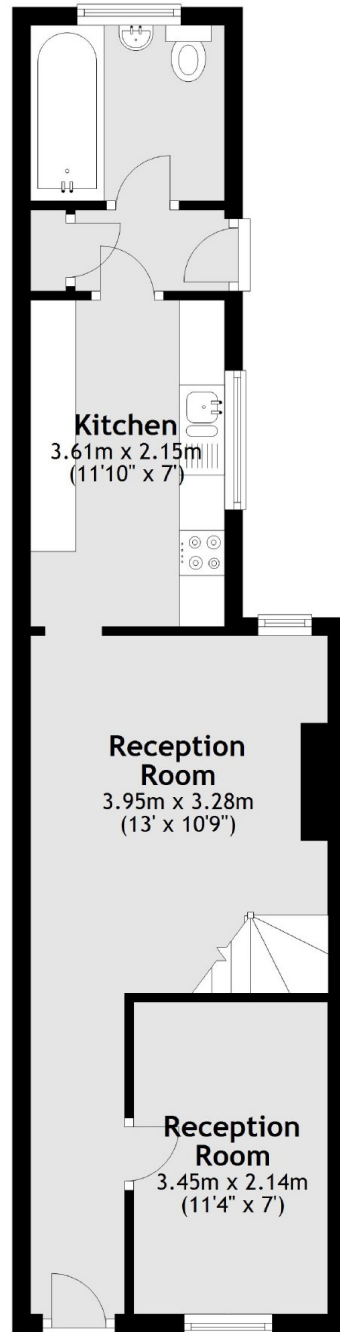
Victor Road is a turning off Stanley Road. This location is popular for schools, transport links into London, Bushy Park and The River Thames. Teddington High Street is also within easy reach.

### Features

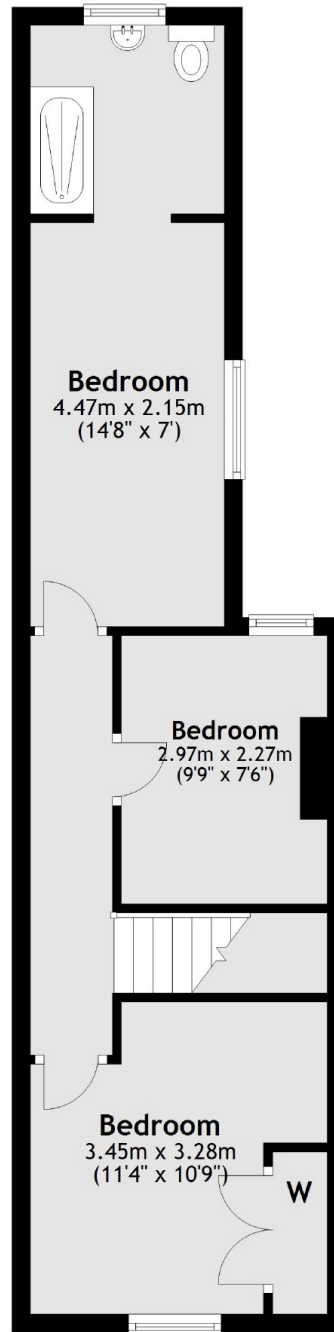
- Victorian Terrace
- Large Secluded Garden
- Potential To Extend STPP
- Three Bedrooms
- Two Bathrooms
- Excellent Location

# Victor Road, Teddington, TW11

Ground Floor



First Floor



Total area: approx. 78.3 sq. metres (842.6 sq. feet)