



**Harrowdene Gardens, TW11**

**£339,950**

**Dexters**



## Harrowdene Gardens, TW11

Located in this popular development opposite Royal Bushy Park, this spacious first floor apartment has access to communal gardens, a garage and is located within easy reach for Teddington Station.

The bright and sunny reception room has a solid wooden floor. There is plenty of space to dine and leads onto the modern kitchen.

The generous double bedroom has fitted wardrobes and completing the accommodation there is a modern bathroom.

The gardens throughout this development are stunning and well cared for. The apartment further benefits a private garage and parking is very easy.

Harrowdene Gardens is off Sandy Lane, an excellent spot for transport, with a well lit private footpath directly leading to Teddington mainline station and Teddington High Street within minutes. Kingston town centre is within easy reach along with the River Thames.

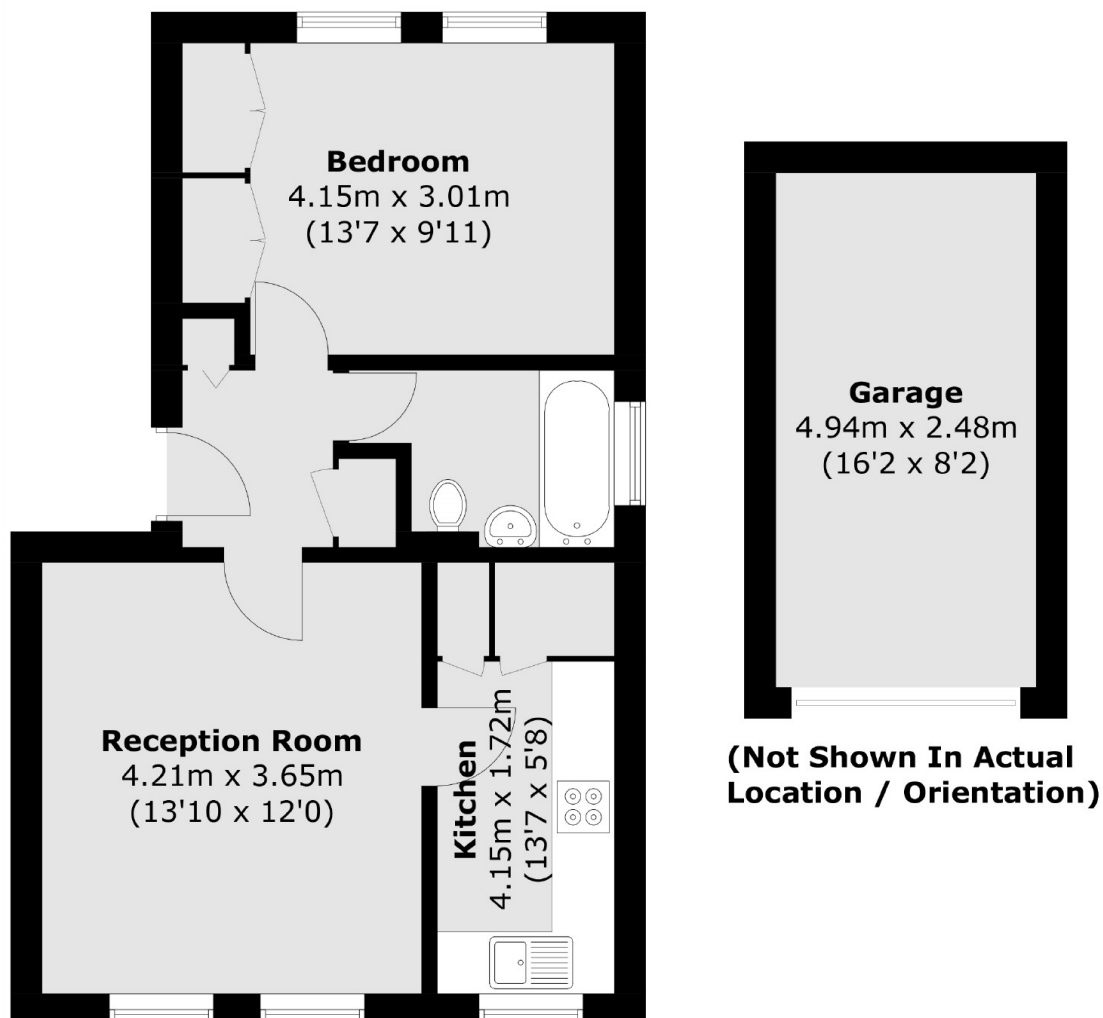
### Features

- Double Bedroom
- No Onward Chain
- Garage
- Excellent Location
- Close To Royal Bushy Park
- Communal Gardens





# Harrowdene Gardens, Teddington, TW11



Total area (approx.): 43.7 sq. m (470.4 sq. ft)  
Garage : 12.4 sq. m (133.5 sq. ft)