



River Reach, TW11

£549,999

This spacious apartment is located on the banks of the River Thames and has an uninterrupted river view. Two bedrooms, a garage and ample living space are just a few features.

Riverside Court is located off Broom Water and River Reach. This location is idyllic and close to transport links, Teddington High Street and Kingston town centre.

Features

- Two Bedrooms
- Two Bathrooms
- Private Garage
- Direct River Views
- No Onward Chain
- Lift Access



River Reach, TW11

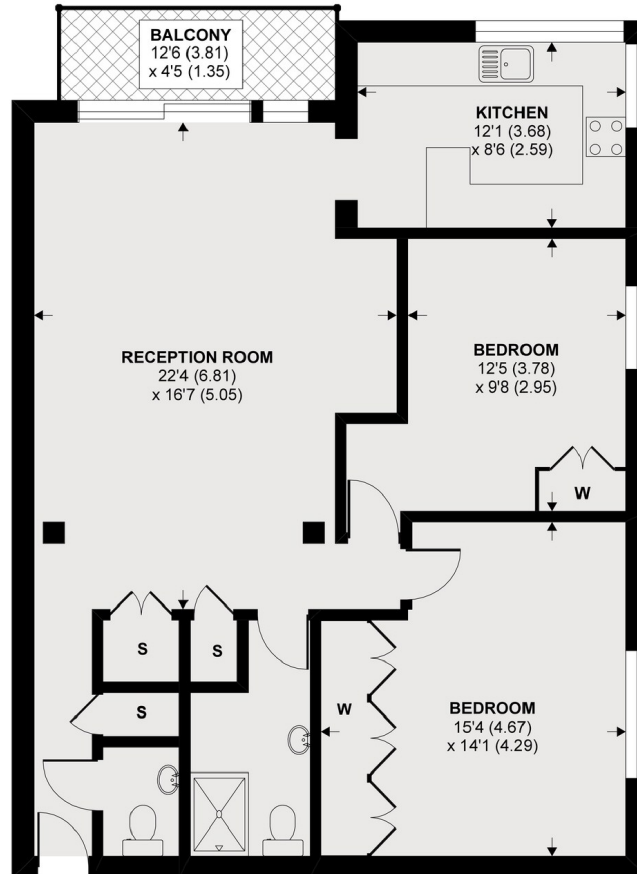
The building is lift serviced and this apartment is located on the second floor. Enter in from the hallway and there are plenty of storage cupboards and a cloakroom.

The reception room faces the river and the sliding doors open onto a private balcony which overlooks the manicured communal gardens leading to the River Bank. This room has plenty of space to relax and dine. The kitchen has enough room for all appliances and also faces the river.

There are two double bedrooms, both with fitted storage and the master has an en suite. There is also an additional shower room. Externally you will find communal parking spaces and a private garage.



River Reach, Teddington, TW11



2nd Floor

APPROX FLOOR AREA 959 SQ.FT 89. SQ.M
BALCONY APPROX FLOOR AREA 56 SQ.FT 5.2 SQ.M

Copyright nichecom.co.uk 2020 REF : 571108