



## Conifers Close, TW11

£359,950

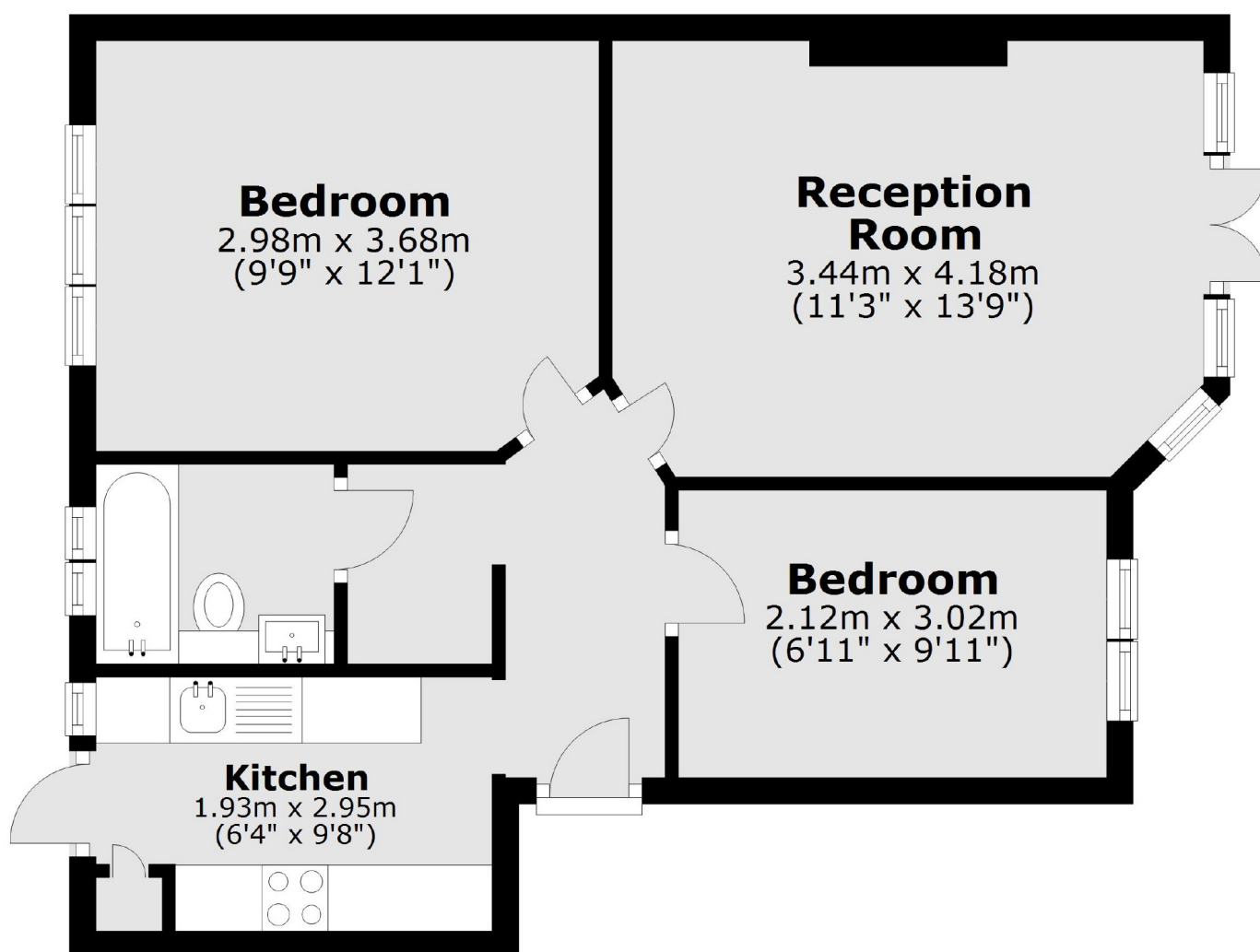
A two bedroom ground floor apartment in an Art Deco purpose built building located just off Kingston road. With access to communal gardens, residents parking and no onward chain this property is not to be missed.

Located 0.3 miles from Sacred Heart Primary, less than 0.5 miles from Hampton Wick Infants, Collis Primary and Teddington Secondary/Sixth Form, 0.4 miles from Bushy Park and just 0.7 miles from Kingston Bridge

### Features

- Purpose Built
- Ground Floor
- Two Bedrooms
- No Onward Chain
- Residents Parking
- Communal Gardens

# Conifers Close, Teddington, TW11



Total area: approx. 48.3 sq. metres (520.3 sq. feet)