



## Udney Park Road, TW11

£579,950

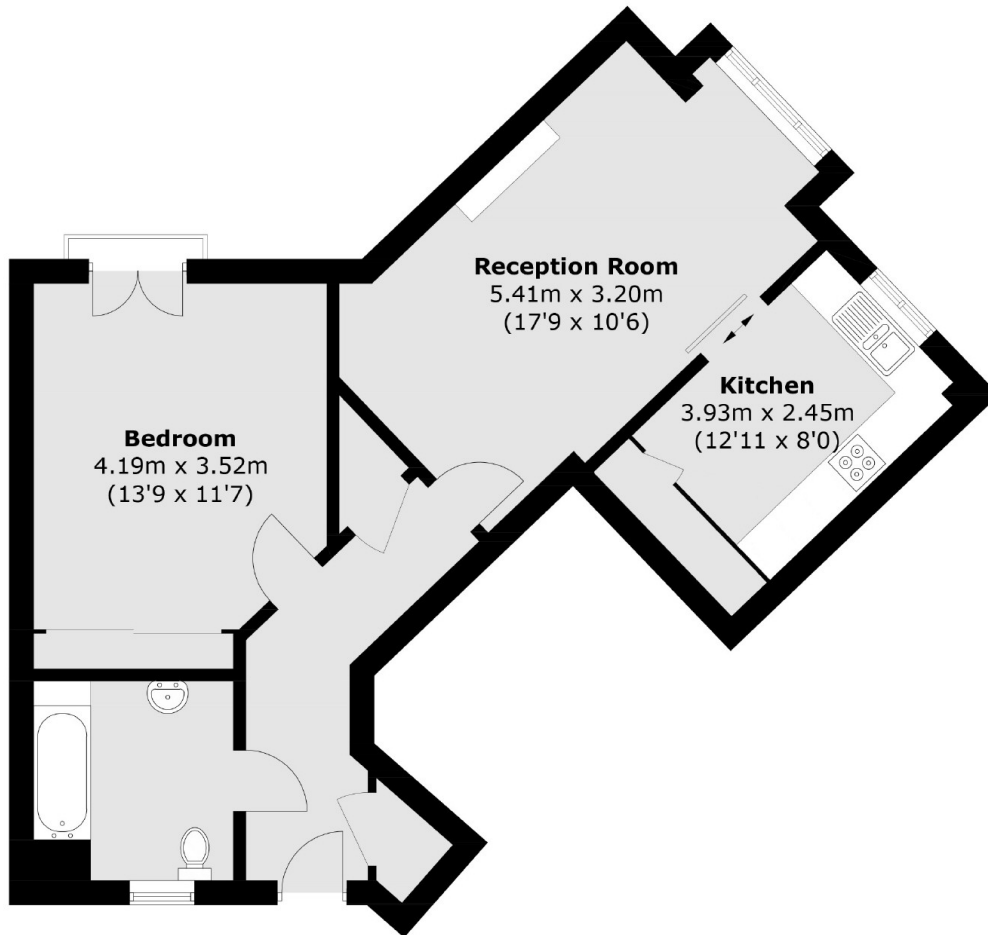
Fullerton Court is a highly regarded retirement development located in the heart of Teddington. Features include on-site restaurant, guest suite, communal gardens and a lift.

Udney Park Road is a turning of Teddington High Street. The High Street is full of independent shops as well as well known High Street stores. Bushy Park, The River Thames and Teddington Station are all close by.

### Features

- Central location
- One bedroom
- Communal area
- Guest suite and on site restaurant
- Exclusively For Persons Aged 65+ Years Of Age
- Fully Managed Facilities

# Udney Park Road, Teddington, TW11



**First Floor**

Total area (approx.): 62.1 sq. m (668.4 sq. ft)