



Lower Teddington Road, KT1

£449,950

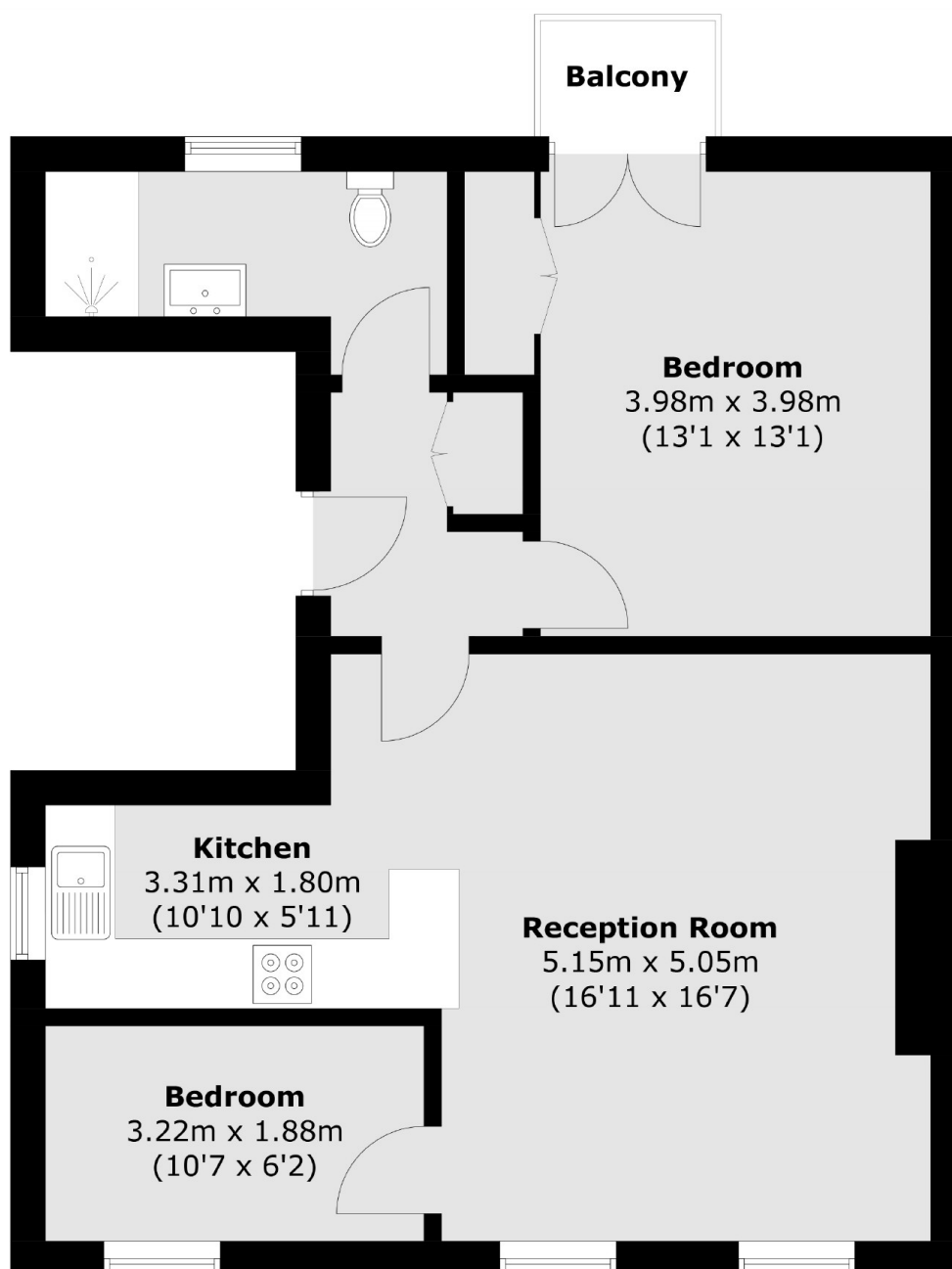
This first floor apartment is offered with no onward chain. The property offers over 600 sqft and has ample natural light throughout. It is located in a lovely spot by the River Thames, close to Teddington High Street and Kingston town centre.

Lower Teddington Road is located off Hampton Wick High Street; within walking distance of Hampton Wick mainline train station and Kingston town centre.

Features

- Period Conversion
- Two Bedroom
- Beautifully Presented
- Communal Gardens
- First Floor
- Communal Parking

Lower Teddington Road, Kingston Upon Thames, KT1



First Floor

Total area (approx.): 59.9 sq. m (644.8 sq. ft)
Balcony (approx.): 1.5 sq. m (16.1 sq. ft)