



Cromwell Road, TW11

£419,995

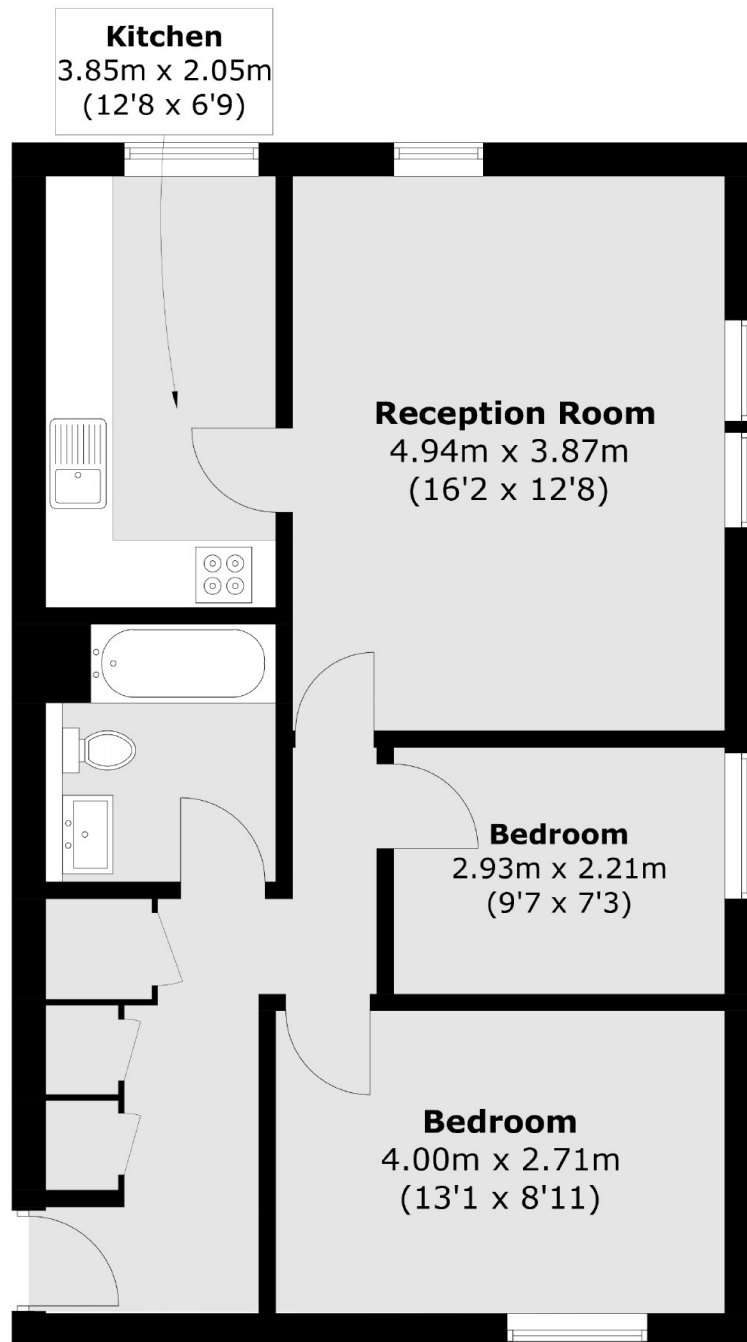
Located in a popular development this two bedroom flat offers a comfortable and spacious living space. Situated within close proximity to Teddington High Street and station, this property is perfect for professionals, couples, or small families.

Redlands in Teddington is a highly sought-after area, known for its excellent schools, green spaces, and vibrant community. The property is conveniently located within walking distance of local shops, cafes, and restaurants,

Features

- Two Bedrooms
- Share Of Freehold
- Allocated Parking
- No Onward Chain
- Close To The River Thames & Royal Bushy Park

Cromwell Road, Teddington, TW11



Total area (approx.): 61.5 sq. m (661.9 sq. ft)

Dexters

Teddington
61 High Street
Teddington
TW11 8HA

Sales
020 8288 8288

Energy Rating: E. We aim to make our particulars both accurate and reliable. However they are not guaranteed; nor do they form part of an offer or contract. If you require clarification on any points then please contact us, especially if you're traveling some distance to view. Please note that appliances and heating systems have not been tested and therefore no warranties can be given as to their good working order.

 **RICS** | Regulated
Estate Agent
and Letting Agent

dexters.co.uk