



Waldegrave Road, TW11

£425,000

This Victorian conversion is immaculately presented throughout and the location is ideal, being close to the station and High Street, with no onward chain you can move straight in.

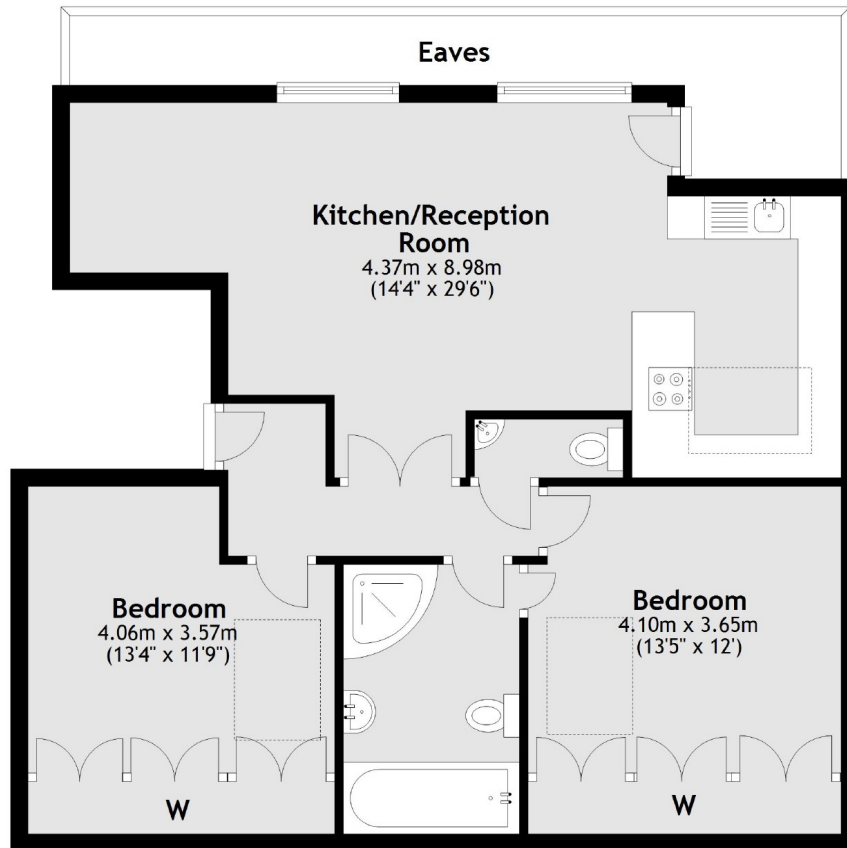
Waldegrave Road is a turning off Teddington High Street with plenty of shops/bars and restaurants. A great position if you need transport links with Teddington mainline station close by and plenty of bus routes.

Features

- Two Double Bedrooms
- Victorian Conversion
- Central Location
- Excellent Storage
- Top Floor
- Share of Freehold

Waldegrave Road, Teddington, TW11

Second Floor



Total area: approx. 71.7 sq. metres (771.6 sq. feet)