



Kings Road, TW11

£1,250,000

Dexters



Kings Road, TW11

This gorgeous Victorian home is located in the popular "Royal Roads" close to transport links, excellent primary and secondary catchments along with being close to Royal Bushy Park.

Enter into the hallway greeted by high ceilings, this leads through to a light and spacious double reception room with plantation shutters, a feature fireplace, bespoke book shelves and cupboards in the alcove with restored original flooring.

The large kitchen/breakfast room has a central island making this sociable area. The bi folding doors, complete with plantation shutters lead onto the secluded garden. This home is one of few that still has a cellar which is excellent for additional storage.

To the first floor there are two double bedrooms with fitted storage and a large family bathroom. To the top floor there are a further two bedrooms and an office. In addition to this floor there is an additional shower room.

The secluded rear garden has a decked patio and newly laid natural lawn with established trees.

Kings Road is an excellent spot for school catchment, transport links from Teddington and Fulwell Station. Teddington and Hampton Hill High Streets are within easy reach offering local coffee shops and dining.

Features

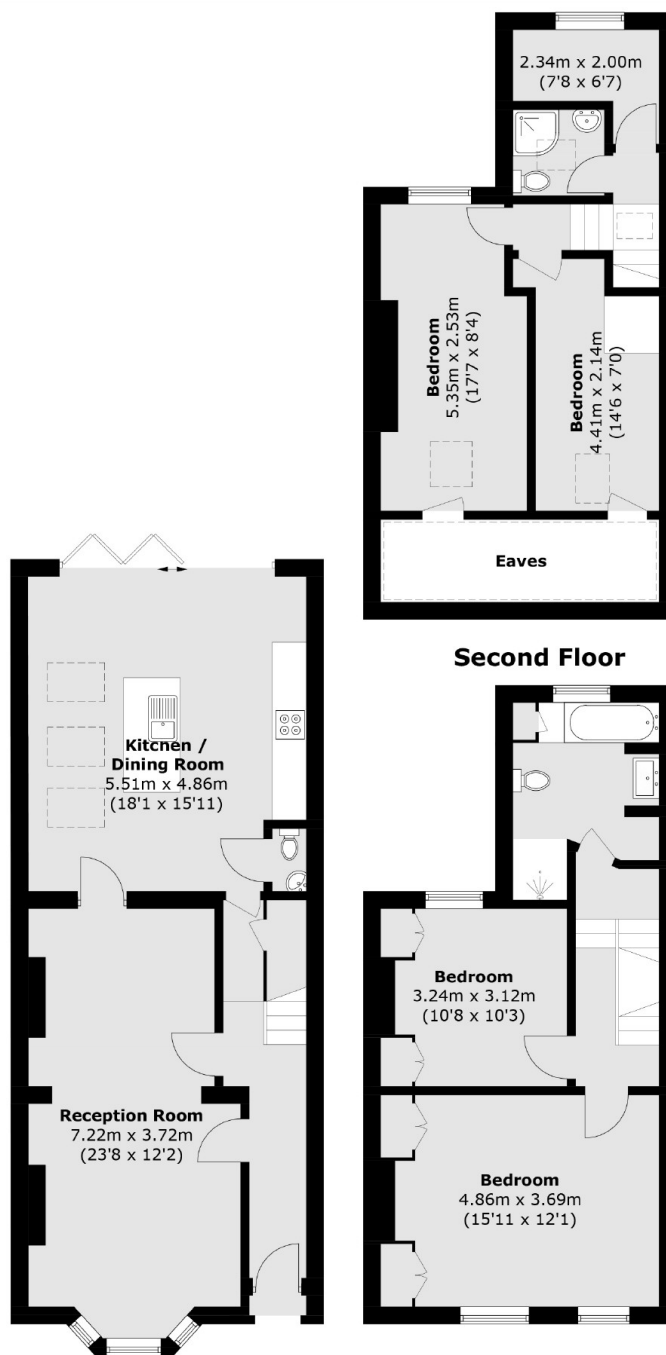
- Victorian
- Four/Five Bedrooms
- Two Bath/Shower Rooms
- Three WC's
- Secluded Garden
- Period Features







Kings Road, Teddington, TW11



Ground Floor

First Floor

Total area (approx.): 140.0 sq. m (1,507.0 sq. ft)
(Excluding Eaves)